

The Grass is Greener with a Sustainable Jersey for Schools Grant

New Jersey School Boards Association Workshop

October 23, 2018



Speakers

Samantha McGraw, Program Manager, Sustainable Jersey

Russel J. Furnari, Manager of Environmental Policy, PSEG Services Corporation

Michael Rollins, Field Representative in the Organizational Development Unit, New Jersey Education Association

Erin Sharpe, Science Teacher, Cedar Creek High School

Catherine Mellon, Supervisor of Instruction, Toms River Regional School District



What is Sustainable Jersey for Schools?

A not-for-profit program that provides tools, training, and grants to NJ public schools to help them implement sustainability initiatives and achieve certification.

- Launched in 2014
- Modeled after successful municipal program
- Free and voluntary
- NJ based and consensus driven
- Awards certification to individual schools but requires School Board and district level support



Benefits of Participation

- Three key components:
 - Identifies **actions** to become more sustainable
 - Provides **tools, resources and guidance** to make progress
 - ***Provides access to grants and funding***



Municipal

Schools



447 Registered
209 certified



796 Registered (from 308
Districts), 242 Certified

Program Participants



Current Grant Funding Totals

<u>Sponsor</u>	<u>Grants Awarded</u>	<u>Total \$</u>
Gardinier (Energy)	20	\$270,000
NJEA	192	\$720,000
NJDOH (Health)	88	\$344,535
PSEG	162	\$500,000
TNC (Tree Planting)	1	\$12,335
TOTAL	463	\$1,855,870

Funding Levels & Usage

- **\$2,000 grants** - general operating support and direct expenses for Green Teams
- **\$10,000 and up** - fund all or part of a project that will score points for an action in the Sustainable Jersey for Schools program



Cycle Timeline

<u>Sponsor</u>	<u>Announcement</u>	<u>Application Deadline</u>
Gardinier (Energy)	Late Summer	October 31
NJEA	Late Summer	October 31
The Nature Conservancy	Mid October	December 14
PSEG	End of October	March 15

Learn more about current funding opportunities:

<http://www.sustainablejerseyschools.com/grants-resources/>

**Please note funding cycles are subject to change and official announcement will be made when funding cycles become available*



Grants Available

The PSEG Foundation is contributing \$100,000 to support the Sustainable Jersey for Schools Grants Program

Four (4) \$10,000 grants
Thirty (30) \$2,000 grants

Application Deadline: March 15, 2019



PSEG
Foundation



Eligibility Requirements

- Registered with Sustainable Jersey for Schools
- Active Green Team
- Use funding to implement an action eligible for points in the Sustainable Jersey for Schools program



Sustainable Jersey for Schools Supporters

Sustainable Jersey for Schools Underwriters



Grants Program



Corporate Sponsors



Platinum Sponsors



Gold Sponsor



Silver Sponsor



Bronze Sponsors



Program Partners



Questions? Call Us!

Grants Program

- Kaitlyn Vollmer, Program Coordinator
- 609-771-3189 or grants@sustainablejersey.com

Schools Program

- Veronique Lambert, Program Coordinator
- 609-771-3427, schools@sustainablejersey.com



Funding Your Sustainability Initiatives

RUSS FURNARI, PSEG

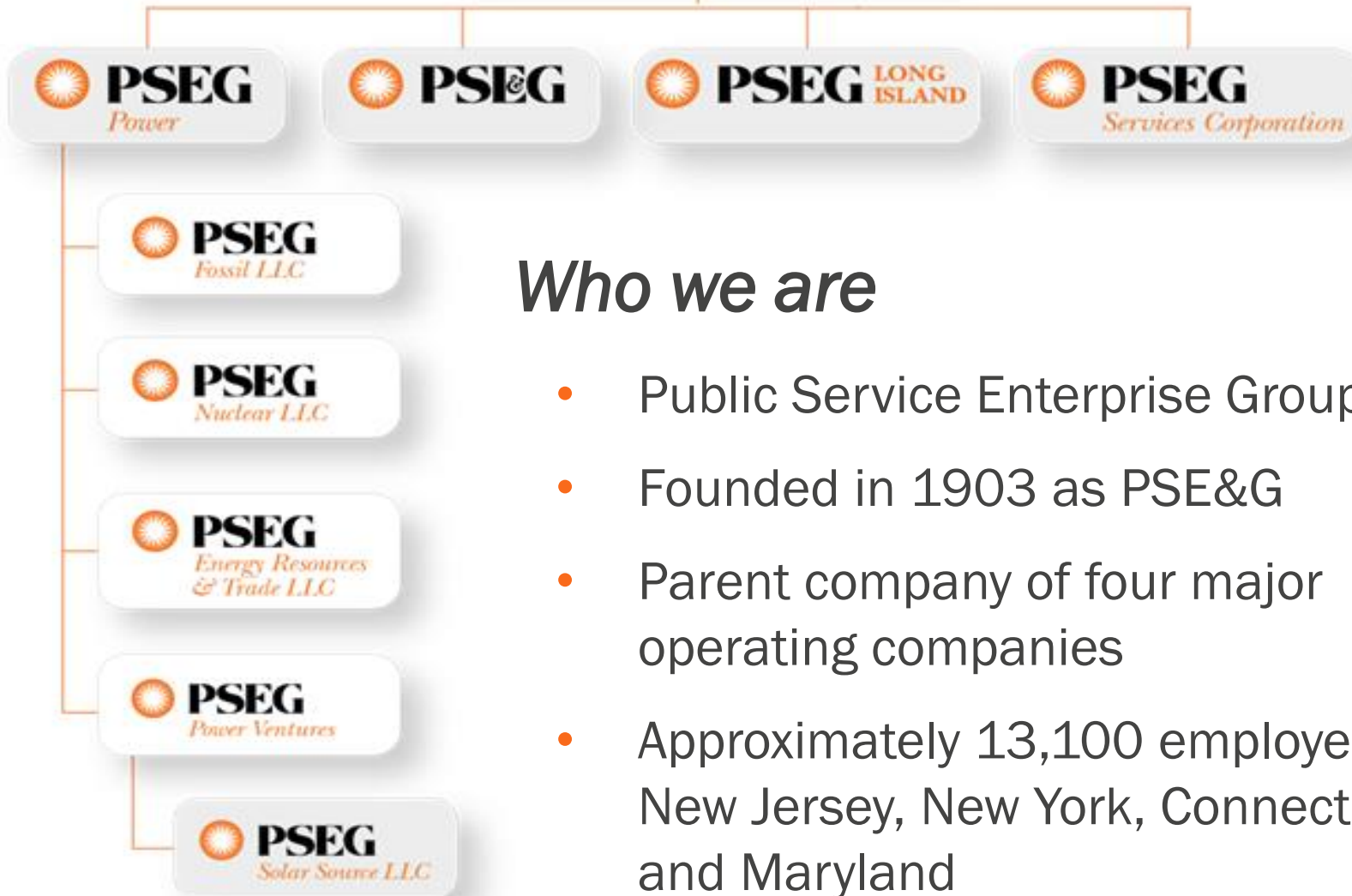


PSEG

We make things work for you.



PSEG



Who we are

- Public Service Enterprise Group
- Founded in 1903 as PSE&G
- Parent company of four major operating companies
- Approximately 13,100 employees in New Jersey, New York, Connecticut, and Maryland



PSEG

We make things work for you.

PSEG Vision

Being a recognized leader for:

- People providing
- Safe, reliable
- Economic and
- Greener Energy

Corporate Citizenship

Corporate Citizenship



Corporate Citizenship and the PSEG Foundation



Resources for Teachers and Supporting STEM

From our emergency preparedness partnership with Sesame Street, Energy & Environmental Resource Center and STEM education, we support programs that engage, excite and inspire students.

[LEARN MORE](#)



PSEG

We make things work for you.

Energy & Environmental Resource Center

LI Customers: (1-800-490-0025)

NJ Customers: (1-800-436-7734)

NJ Gas Leak / Power Outage

Corporate Citizenship / Education & Outreach

Energy & Environmental Resource Center

Energy & Environmental Resource Center

Let's Get Ready Program

STEM Education



An exciting learning center focused on building a greater understanding of energy, environmental challenges and strategies for balancing energy demand with environmental stewardship.

[Learn more >>](#)

[Learn more >>](#)

[Learn more >>](#)

PSEG & Sustainable Jersey

- Providing the path *and* the means to enact change
- PSEG Foundation has provided \$1.6M in operating and grants program funding for municipalities and schools
- Municipal grants - \$20k, \$10k, \$2k
- Schools grants - \$10k, \$2k
- 242 Sustainable Jersey Certified Schools – 227 at Bronze & 15 Silver level
- PSEG is the grants underwriter

Sustainable Jersey

New Schools Certification Actions

New Actions

- **Energy**
 - Behavior-Based Conservation Programs
- **iSTEAM**
 - iSTEAM Planning & Implementation
 - iSTEAM Strategic Plan
 - iSTEAM Collaborative Units of Study
 - iSTEAM Professional Development Plan
- **School Culture and Climate**
 - Culture & Climate Needs Assessment
 - Inclusive Environments Where All Can Thrive



Why Schools?

- Promote environmental stewardship
- Sustain and strengthen communities where we serve customers
- Create next generation of informed, concerned citizens



Photo 4: Students building a school garden that will utilize the compost from the Waste NOT! project

Photo 2: Showing of "A Plastic Ocean" to students at the Middle School following a talk by the Environmental Commission that over 100 students attended



Sample Projects



Photo 3: Students getting ready for a lesson taught in the outdoor classroom



Photo 1: Project team meeting at the school one Saturday to plan the Living Learning Landscape

Photo 2: Project team planning the installation of the rain garden portion of the project



Composting ◇ Recycling ◇ Greenhouse & school gardens ◇
Outdoor classrooms ◇ Farm stand & farmers markets ◇
Sustainability education ◇ Rainwater collection & rain gardens ◇
Green team support

Highlighted NJEA Projects



- Sustainable Jersey for Schools Program Underwriter since 2015
- \$1,000,000 to support a sustainable future for children and communities across the state
 - **720,000** in direct funding to schools through the Sustainable Jersey for Schools Grants Program



NJEA-Funded Grants

Grant	2015	2016	2017	2018*	TOTAL
\$10,000	11	10	11	10	42
\$2,000	35	40	35	40	150
TOTAL	46	50	46	50	192

* To be awarded in early-January 2019. Applications due October 31st



Does Your School Have A Project That Needs Funding?

Application Information

The 2018 NJEA Schools Grants Program cycle will award:

- Ten (10) \$10,000 project grants to school districts and schools
- Forty (40) \$2,000 grants to support school green teams

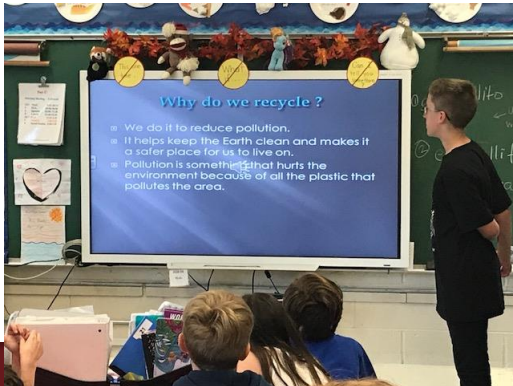


Online Application Deadline: Wednesday, October 31, 2018 at 11:59pm

Recipient Announcement Date: early-January 2019

Learn more about this funding opportunity by going to

<http://bit.ly/2018NJEAGrantsCycle>



\$10,000 Grant Projects

1. *Nature Story Trails*

- **Applicant:** Seth Boyden Elementary School
- **District:** South Orange-Maplewood School District
- **County:** Essex

2. *Winter Garden Project*

- **Applicant:** West Cape May Elementary School
- **District:** West Cape May Elementary School District
- **County:** Cape May

3. *An Outdoor Classroom to Inspire*

- **Applicant:** Weymouth Township School District
- **County:** Atlantic



Nature Story Trails

Seth Boyden Elementary School in Essex County used their \$10,000 grant to create **nature story trails**. These trails act as a discovery and learning experience for students and are designed to teach children about the natural world and their role in protecting it. This project united the outdoor learning programs of the school's garden program and green team. Teachers also regularly integrate the trails into their curriculum.



Winter Garden Project

West Cape May Elementary School in Cape May County used their \$10,000 grant to create a **winter garden project**. This project extended the growing season and opportunities and outdoor classroom experiences for students by constructing a greenhouse. The project has enhanced the school curriculum, allowing students to learn about healthy eating, and established hands-on STEM curricula. It also united parents, teachers, and community members in the building of the greenhouse.



An Outdoor Classroom to Inspire

Weymouth Township School District in Atlantic County used their \$10,000 grant to create an **outdoor classroom**. The classroom is complete with student seating and three raised garden beds, and has allowed students to learn about how their food is grown and used. A lot of activities are held in the classroom. Students use the herbs grown in the garden in lunch preparation. The outdoor classroom has electricity to allow teachers to make the most use of the space. It also serves as a quiet reflective space for students.



\$2,000 Grant Projects

1. *Eldridge Park Pedal Power*

- **Applicant:** Eldridge Park Elementary School
- **District:** Lawrence Township Public Schools
- **County:** Mercer

2. *WHOLE Child Program*

- **Applicant:** John Brainerd Elementary School
- **District:** Mount Holly Township Public Schools
- **County:** Burlington

3. *Rethinking Recycling*

- **Applicant:** Nixon Elementary School
- **District:** Roxbury Township School District
- **County:** Morris



Eldridge Park Pedal Power

Eldridge Park Elementary School used their 2,000 grant to purchase **two double-sided bike racks** that allowed more students to ride their bikes to school. At the Title 1 School, there were students who did not own bicycles and did not know how to ride them. In order to provide these students a way to learn, four bicycles and helmets were purchased and the physical education teacher worked with them to learn balance and eventually bike riding.



WHOLE Child Program

John Brainerd Elementary School used their \$2,000 grant to create its **WHOLE (Wellness and Health Obtained through our Learning Environment) Child Program**. The school purchased yoga balls, mats, and wobble chairs for exercise during the morning wellness program and indoor recess. Every morning, yoga is taught to twenty-four K-2 students. Overall the program has expanded the school's efforts to implement a growth mindset and 21st century learning environment throughout the school.



Rethinking Recycling

Nixon Elementary School used their \$2,000 grant to develop a **robust recycling program** that includes an extensive educational component targeted to students, staff, and families. Students have taken ownership of the program, encouraging the entire school community to be good stewards. New, clearly-marked recycling bins have been provided and custodial staff have been trained to make sure that the recycling collected in classrooms, the cafeteria, and staff kitchen is properly disposed of. This ensures that the hard work of the students is not wasted. The school now serves as a model for all other schools within the district.





Erin Sharpe

NJEA & Sustainable New Jersey





Challenges &

- Administrative changes
- Ordering
- Estimating costs

Successes

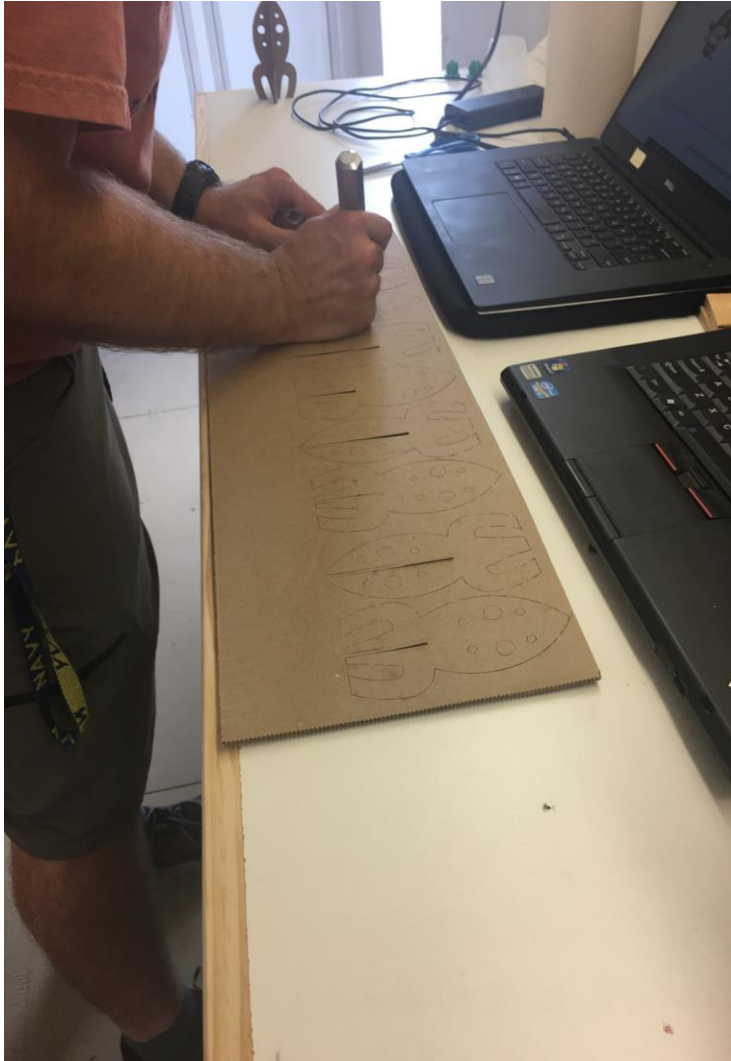
- Finding Supporters
- Working Together
- Expanding Programs

First event:

- Atlantic County Utility Authority: Earth Day Celebration!







Laser Engraver

Recycled
Cardboard
rockets



Plastic Recycler Project



School Certification

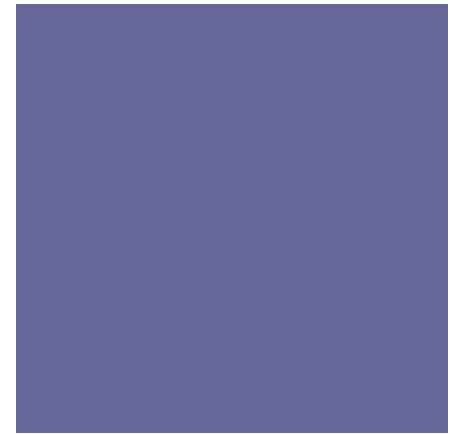
- iSTEAM
- Innovation Projects
- Learning Environments
- Student & Community Outreach

Thank you

Are there any questions?



Play It Again, Toms River



NJBSA Conference
October 23, 2018

Catherine Mellon
Supervisor of Instruction
Toms River Regional Schools



+

“Playing music is the brain’s equivalent of a full-body workout”



- Teaches perseverance and creates a sense of achievement
- Improves coordination, listening skills math skills reading & comprehension skills
- Creates a sense of responsibility and nurtures self expression
- Exposes Students to Culture and History

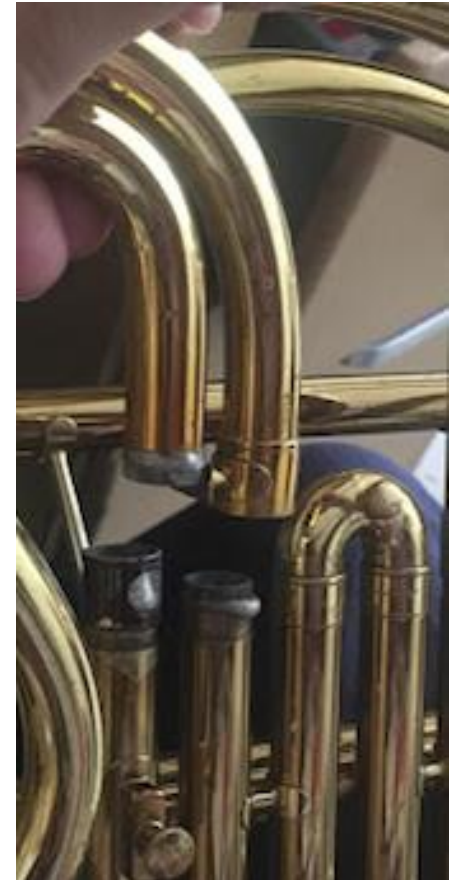
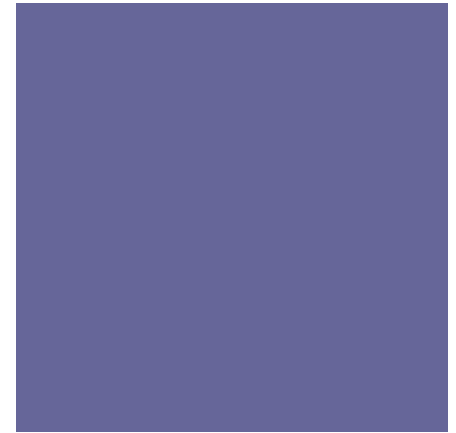


Play It Again, Toms River

Increase student participation in the arts by increasing equitable access to the instrumental music program

Refurbish older instruments, renew accessories, and create basic repair kits for teacher use

Advance sustainability efforts in our community by allowing the district to reuse instruments that may have been discarded





Partners

■ Garden State Music Center

- Scholarship: used instrument & lessons
- \$500 repair overages

■ Garden State Philharmonic

- Discounted tickets to performances
- Working on small ensembles visiting schools

■ Zzak G. Applaud Our Kids Foundation

- The foundation provides performing arts scholarships in vocal instruction, dance, acting, and instrumental music to children ages 7-18.



+ Developing a Budget

Teachers were asked to enter instruments needing repairs and their estimation of costs onto a shared Google doc

One teacher collected cost information for simple repair kits

- In-Kind Contributions
 - District repair budget
 - Garden State Music Center
 - Garden State Philharmonic



TRRS Instrument Test Drive

Ready! Set! Play!
At the Instrument Test Drive



TRRS 3rd & 4th graders and parents
are invited to attend the Instrument Test Drive.



June 13
HS-North
Open House
6-8 pm

Our instrumental music program begins in 4th and 5th grade, and this is an opportunity for children to "test drive" a variety of instruments, meet teachers and students involved with the program, ask questions about band and orchestra, and let us know if they are interested in joining!

High school ensembles will perform throughout the evening.

RSVP <https://www.google.com/forms/d/1GjxCoWih4kK2>



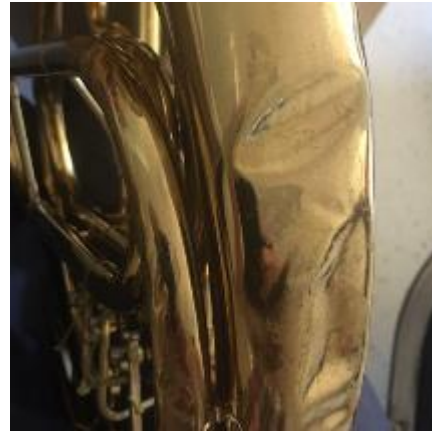


So Far

37 instruments repaired

18 replacement cases

36 bows





Learning Along the Way

- Growing teacher leaders
 - Recognizing content expertise
 - Developing Instrument Test Drive into annual event
- Unrepairable instruments needing replacements
- Working with small business in the community



+ Sustainable Jersey for School Actions

- Innovative Project: projects that show case new approaches to sustainability are essential to making progress.
- Materials Reuse: part of the larger district program

