

Readington Middle School Case Study

Readington, Hunterdon County, NJ
Jodi Bettermann, Energy Efficiency Coordinator

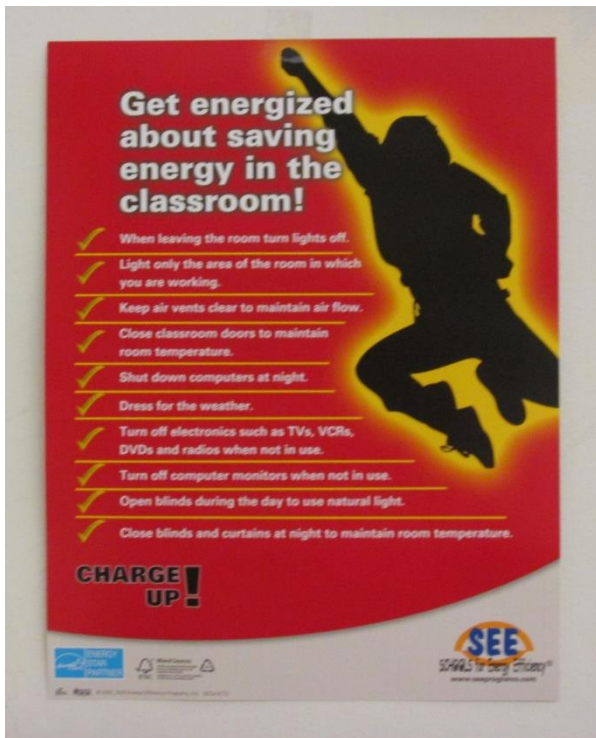
Readington School District

- * Located in Hunterdon County, Central New Jersey
- * Suburban location
- * Includes four schools: two K-3 schools, one 4-5th grade school and one 6-8th grade middle school
- * Approximately 1700 students in district

Energy Program history

- * June 2011 performed LGEA audit of facilities
- * October 2012 joined Schools for Energy Efficiency (SEE) program
- * Hired district Energy Efficiency Coordinator and formally began energy program
- * September 2015 received Sustainable Jersey for Schools certification for all district schools

Energy Awareness Campaign



Get energized about saving energy in the classroom!

- ✓ When leaving the room turn lights off.
- ✓ Light only the area of the room in which you are working.
- ✓ Keep air vents clear to maintain air flow.
- ✓ Close classroom doors to maintain room temperature.
- ✓ Shut down computers at night.
- ✓ Dress for the weather.
- ✓ Turn off electronics such as TVs, VCRs, DVDs and radios when not in use.
- ✓ Turn off computer monitors when not in use.
- ✓ Open blinds during the day to use natural light.
- ✓ Close blinds and curtains at night to maintain room temperature.

CHARGE UP!

SEE
SCHOOL for Energy Efficiency
www.seeingame.com

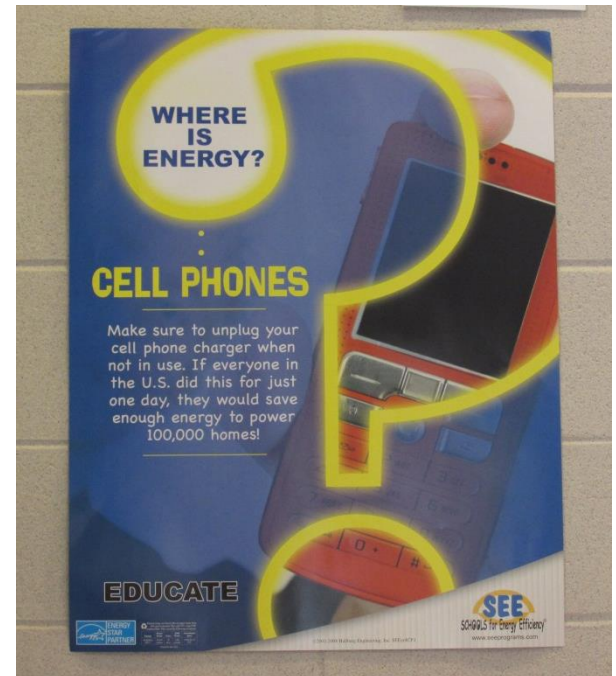
ENERGY STAR
Recycling
© 2008 SEE. All rights reserved. SEE08001



Save Energy!
TURN ME OFF

Shut Me Off

The NEED Project
www.need.org
1-800-875-5029



WHERE IS ENERGY?

CELL PHONES

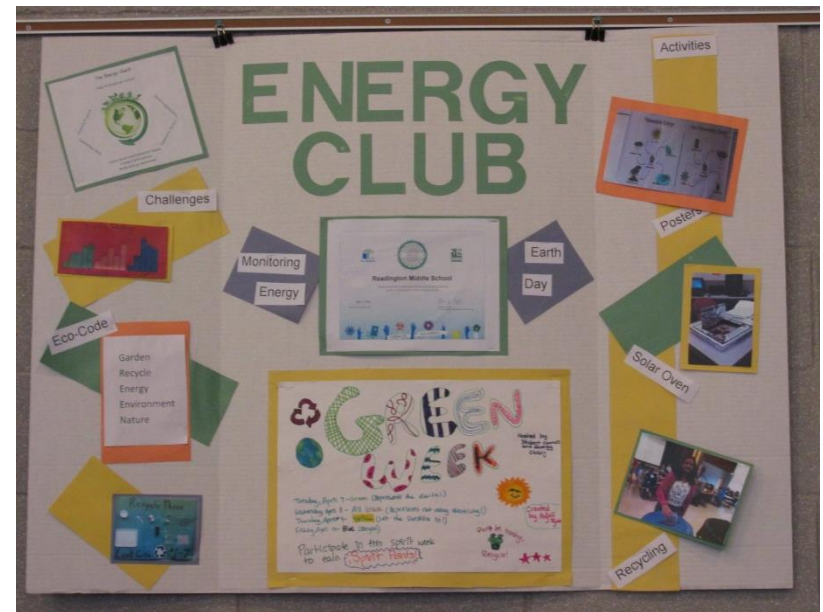
Make sure to unplug your cell phone charger when not in use. If everyone in the U.S. did this for just one day, they would save enough energy to power 100,000 homes!

EDUCATE

SEE
SCHOOL for Energy Efficiency
www.seeingame.com

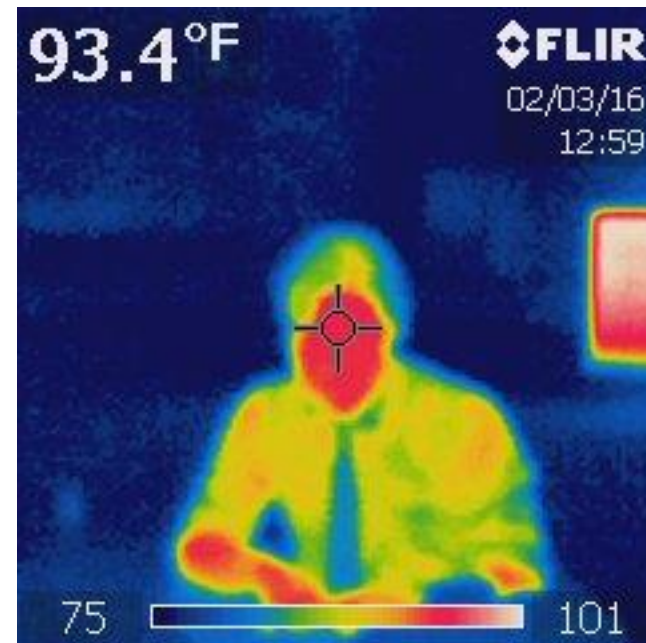
ENERGY STAR
© 2008 SEE. All rights reserved. SEE08001

Staff & Student Involvement



Energy Education

6th Grade Science class
Infrared light investigation



Energy Tracking

YEAR 3 ENERGY SAVINGS: Dec. 2014 - Nov. 2015					
BUILDING	% CHANGE ELECTRIC	% CHANGE NAT GAS	% CHANGE TOTAL ENERGY (BTU)	% CHANGE ELECTRIC DEMAND	AVOIDED COST
Holland Brook School	-21%	-2%	-10%	-6%	\$35,276
Readington Middle School	-17%	-16%	-17%	-13%	\$37,715
Three Bridges School	-20%	0%	-7%	-15%	\$13,162
Whitehouse School	-20%	10%	-2%	-15%	\$12,898
Grand Total	-20%	-4%	-10%	-11%	\$99,050

Energy Efficiency Project

- * November 2013 – December 2014 window and door replacement project at Readington Middle School
- * Was identified in the LGEA audit
- * Energy tracking and management allowed us to see the energy savings in the building

Readington Middle School Window Replacement Project

Before



After



Readington Middle School Window Replacement Project

Before



After



Energy Efficiency Actions

- * Energy Audit - LGEA
- * Energy Tracking and Management
 - * Input information from utility bills into energy tracking software
- * Building Efficiency Measures
 - * Window project closed building envelope
 - * Baseline energy use data before project
 - * Energy use data after project completion

Summary

- * Window replacement project and behavior modification resulted in decrease in energy usage at Readington Middle School
- * Energy Use Intensity (EUI) decreased by 3%

Thank you.

Questions? Contact Jodi Bettermann at
jbettermann@readington.k12.nj.us