



SUSTAINABLE JERSEY GRANTS PROGRAM

FUNDED BY:



- All attendees are muted
- Ask questions in the questions box during the presentation or raise your hand at the end
- The presentation recording and slides will be posted on the Sustainable Jersey for Schools website





Sustainable Jersey for Schools

To achieve a brighter future, one school at a time.

- Empowers public schools to build a better world for future generations with the tools, training, and financial incentives necessary to pursue critical sustainability initiatives
 - Free, voluntary sustainability certification program
 - Subject-specific guidance for over 100 sustainability topics
 - Technical Assistance programs
 - Annual Grants Program



ACTIONS FOR SCHOOLS

To become Sustainable Jersey for Schools certified, schools and districts must complete and document actions from this list. Certification is awarded to schools and is good for three years.

BRONZE

Mandatory **Green Team**
2 out of 13 PRIORITY ACTIONS
150 points across 6 of 22 categories

SILVER

Mandatory **Green Team**
3 out of 13 PRIORITY ACTIONS
350 points across 8 of 22 categories



Bronze or Silver certified schools can earn Digital Schools Star Recognition

Action	Points
BOARD LEADERSHIP & PLANNING	
District Sustainability Policy	10
Professional Development for Sustainability	5 to 20
Green Enhancement of District Strategic Plans	10
Strategic Plan Implementation of Green Initiatives	10
School Community Asset Mapping	10
School District Foundation	10
CLIMATE MITIGATION & RENEWABLE ENERGY	
School Carbon Footprint	10
Buy Renewable Energy	10
Onsite Renewable Generation System - Geothermal	10
Onsite Renewable Generation System - Solar	5 to 45
DIGITAL LEARNING LEADERSHIP	
District Commitment to Digital Learning	10 to 15
Equitable Access to Digital Learning	10 to 15
Community Engagement	10
DIGITAL LEARNING PRACTICES	
Digital Citizenship	10
Digital Innovative Classroom # 1	10 to 15
Digital Innovative Classroom # 2	10 to 15
Authentic Application of Digital Learning Tools & Content	10 to 15
Personalized Learning & Growing Independent Learners	15
Professional Growth & Collaboration	15
DIGITAL TECHNOLOGY ACCESS	
Data Safety & Security Policy	10
Digital Device Life Cycle Management	10
Infrastructure	10
Support for Digital Teaching & Learning	20

DIVERSITY & EQUITY

Accessible Communications	10
Breakfast After The Bell	20
Diversity on District Task Forces & Committees	10

ENERGY EFFICIENCY

Energy Efficiency for School Facilities	5 to 50
Behavior-Based Energy Conservation Programs	10
Energy Tracking & Management	10 to 20

FOOD & NUTRITION

Healthy Food Choices Beyond the Cafeteria	10
Promote Locally Grown Foods	10
School Gardens	10 to 30

GREEN CLEANING

Green Cleaning Policy & Plan	10
Green Cleaning Equipment	10
Green Cleaning Supplies	10
Green Cleaning Training & Education Programs	10

GREEN DESIGN

Green Building Policy	10
Design, Build or Certify New Construction & Major Renovations to Green Standards	10 to 50
Green Building Training	10

GREEN PURCHASING

Green Purchasing Policy	10
Recycled Paper Purchase	10
Sustainable Fleets	5 to 15

HEALTHY SCHOOL ENVIRONMENTS

Access to Healthy Water in Schools	20
Anti-Idling Education & Enforcement	10
Classroom Chemical Purchase, Storage & Disposal Policy	15
Classroom Cleanup Protocol & Practices	10
Integrated Pest Management - Education & Organic Lawn Care	10
Outdoor Air Quality Awareness Program	10
Radon Testing, Education and Mitigation	10 to 20

INNOVATION PROJECTS

Innovative Project #1	10
Innovative Project #2	10

INTEGRATED SCIENCE, TECHNOLOGY, ENGINEERING, ARTS & MATH (ISTEAM)

ISTEAM Planning & Implementation	15
ISTEAM Strategic Plan Indicators/ISTEAM Policy	10
ISTEAM Collaborative Units of Study	10 to 50
ISTEAM Professional Development Plan	5 to 20

LEARNING ENVIRONMENT

All Arts Disciplines Offered	10
Curriculum Mapping	15 to 30
Outdoor Classroom	10
Student Participation in the Arts	10

SCHOOL CULTURE & CLIMATE

Inclusive Environment Where All Can Thrive	10
School Culture & Climate Needs Assessment	20
Social Emotional Learning Integrated Unit	10

SCHOOL GROUNDS

Biodiversity Audit & Management Plan	10
Biodiversity Project	10
Green Infrastructure Assessment & Plan	10
Green Infrastructure Installation	10

STUDENT & COMMUNITY OUTREACH

Green Team	10 to 15
Community Education & Outreach	10
Civic & Stewardship Volunteer Initiatives	10
Enrichment Programs through Partnership	10
Green Challenges	10
Green Fair	10
"Green" Your Green Fair or School Event	10

STUDENT LEARNING

(One approved action in this category counts toward priority requirements)

Education for Sustainability Integrated Unit	10 to 50
Education for Sustainability, Pre K-3	5 to 25
Education for Sustainability, Grades 4-12 Arts	5
Education for Sustainability Grades 4-12 Career and Technical Education	5
Education for Sustainability Grades 4-12 English Language Arts	5
Education for Sustainability Grades 4-12 Health	5
Education for Sustainability Grades 4-12 Math	5
Education for Sustainability Grades 4-12 Science	5
Education for Sustainability Grades 4-12 Social Studies	5
Education for Sustainability Grades 4-12 Technology	5

STUDENT & STAFF WELLNESS

School Wellness Council	20
Policies to Promote Physical Activity	10
Programs to Promote Physical Activity	10
Staff Wellness Program	10

STUDENT SAFETY

Safe Routes to School District Policy	10
Pedestrian and Bicycle Safety & Promotion Initiatives	10
Safe Driving Awareness Programs for High School Students	10
School Travel Plan for Walking & Biking	10

WASTE REDUCTION & RECYCLING

Waste Audit	10 to 20
Campaign To Reduce School Food Waste	10
Food Service Training & Best Practices to Reduce Food Waste	10
Food Recovery - Share Tables & Donation	10 to 20
Food Waste Recycling/Composting	15
Document Recycling Rates	10
Materials Reuse	10
Recycling Non-Mandated Materials	5 to 20

Priority action. Schools must complete at least two priority actions to achieve certification.

Mandatory action. The district or schools must complete the Green Team action to achieve certification.

District-only action. District actions earn points for all registered schools in the district.

School-only action.

Digital Schools action.
Visit www.sustainablejerseyschools.com for more information about the requirements for adding Digital Star Recognition to Bronze or Silver certification.

Parallel action in the Sustainable Jersey municipal certification program. Visit the participating town map at www.sustainablejersey.com to find contact information for your local municipal green team to explore working with them on this action.

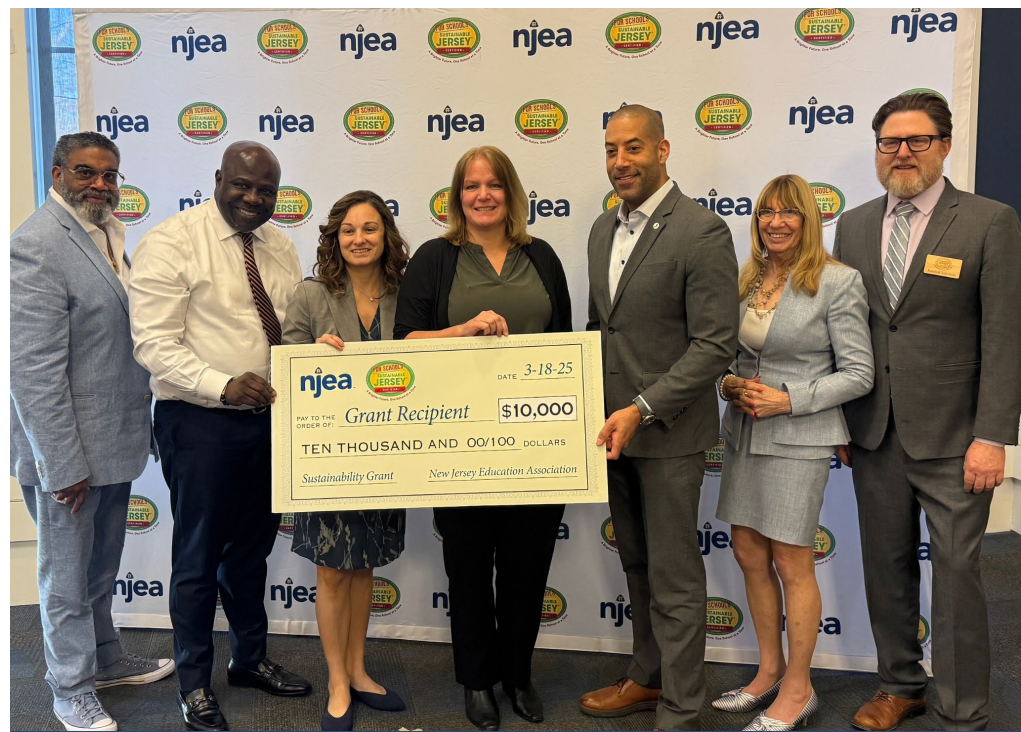
Please note: Program actions and points may be subject to change. For the current official list of actions and points visit the website.





Sustainable Jersey Grants Program

- Provides funding for municipalities and schools participating in the Sustainable Jersey programs
- Since 2009, over \$3.6 million awarded to participating public schools and school districts for over 800 projects
- Over 56% of registered school districts have received at least one grant
- 50% of all grant funding is reserved for certified schools



Hackensack Public Schools - \$10,000



Our Partnership with NJEA

- The New Jersey Education Association underwrites both the Sustainable Jersey for Schools program and the Grants Program
- NJEA is contributing \$180,000 to support the 2025 Sustainable Jersey for Schools Grants Program for public school districts and schools
- **NJEA has provided over \$2.75 million in program support and grants since 2014**





Grants Cycle Overview

All information and resources for the grants cycle can be found on the Sustainable Jersey for Schools website:

Grants and TA ⇒ NJEA Cycle

bit.ly/SJSNJEAgrants

[f](#) [t](#) [@](#) [in](#) [v](#)

ABOUTNEWSSUPPORT USCONTACT USHOMEQRegisterSign in

1Grants & Technical AssistanceCertificationActionsEventsResourcesGet Involved

Trees for Schools

NJEA Cycle

> Free Energy Technical Assistance for New Jersey School Districts and Municipalities

SJ-PSE&G Energy Efficiency Partnership Program

EmPowered Schools

> Thinking about Applying for Grants?

> Grant Recipient Information

Previous Recipients & Projects



SUSTAINABLE JERSEY
GRANTS PROGRAM
FUNDED BY: **njea**

2025-2026 NJEA Grants Cycle

The New Jersey Education Association (NJEA), as a Sustainable Jersey for Schools program Underwriter, is contributing \$180,000 to support a Sustainable Jersey Grants Program cycle for schools and school districts affiliated with NJEA. With this contribution, NJEA has provided \$2.75 million to support a sustainable future for children and communities across the state.

Online Grant Application

Online Application Deadline: Friday, October 31, 2025, at 11:59 p.m.

[Access the Online Grant Application](#)



Eligibility Requirements



School OR District

Student & Community Outreach

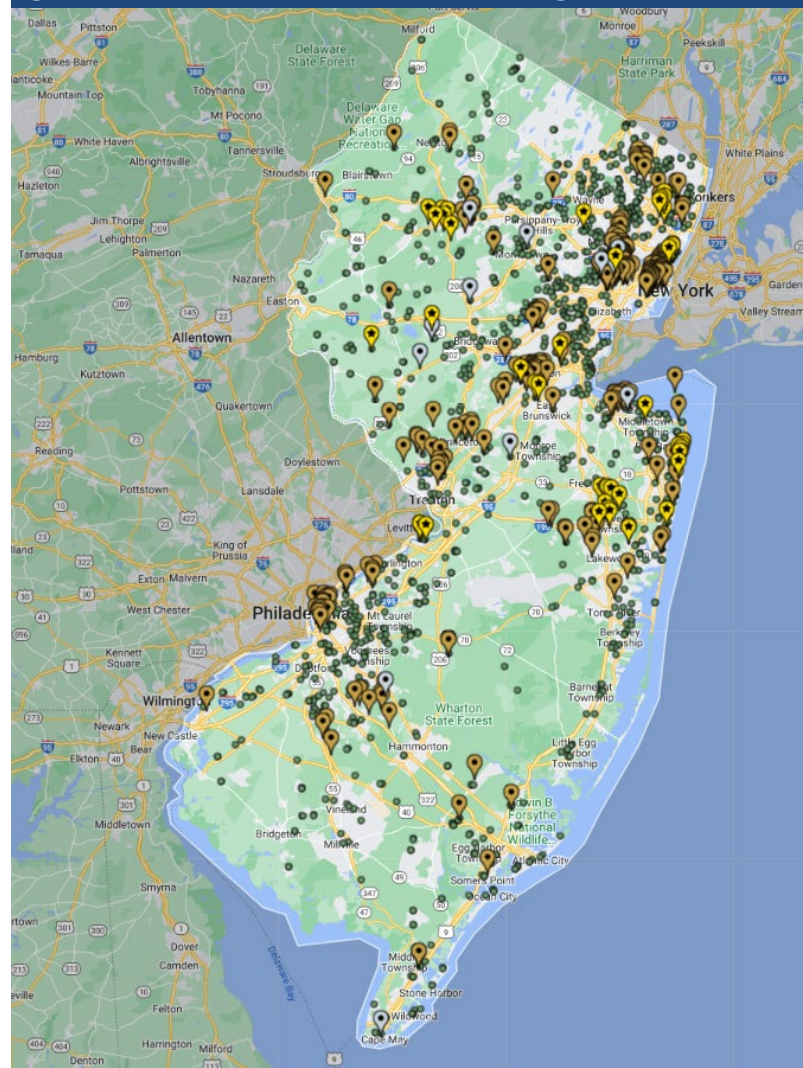
Green Team

10 Points

⚠ Required

• THIS ACTION HAS VARIABLE POINTS: 10, 15

Check the [map](#) to determine your Sustainable Jersey status

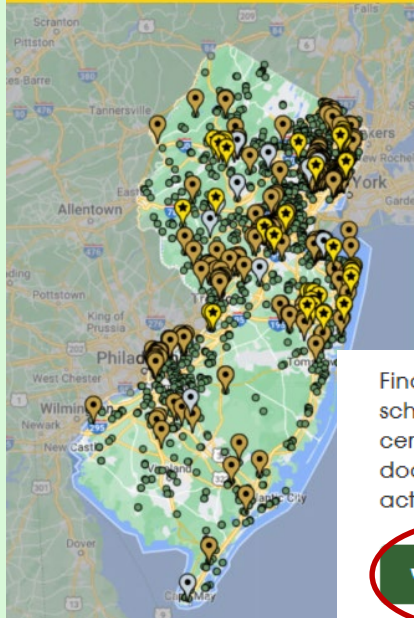




Participants Map Search

Use the [Participating Districts & Schools](https://sustainablejerseyschools.com/certification/search-participating-districts-schools-approved-actions/) (sustainablejerseyschools.com/certification/search-participating-districts-schools-approved-actions/) page to check your school or district's status in the Sustainable Jersey for Schools program

View Districts, Schools and Approved Actions



Click on View Map on the Sustainable Jersey for Schools website's homepage

Find participating districts and schools and search school certification reports to view documentation for approved actions.

View Map

Use the List View and Ctrl+F to find your school

MAP VIEW

LIST VIEW

* If not listed, your school district or school is not registered

APPLICANT	DISTRICT	CERTIFICATION	<u>STATUS</u>
Franklin Township Public Schools (Somerset)	Franklin Township Public Schools		SD Registered
Conerly Road Elementary School (Somerset)	Franklin Township Public Schools		Registered
Elizabeth Avenue Elementary School (Somerset)	Franklin Township Public Schools	BRONZE	Certified
Franklin High School (Somerset)	Franklin Township Public Schools	SILVER DIGITAL SCHOOLS STAR	Certified & Digital Star



Previous Grant Recipients

Grant Cycle of Previous Award	Amount	Grant Status	Eligible to Apply for \$10k Grant	Eligible to Apply for \$2k Grant
2025 PSEG	\$10,000 or more	Open	No	Yes
		Closed +	No	Yes
	\$2,000	Open	Yes	No
		Closed +	Yes	No
2024 PSEG or NJEA*	\$10,000 or more	Open	No	Yes
		Closed +	Yes	Yes
	\$2,000	Open	Yes	No
		Closed +	Yes	Yes
2015-2023 PSEG, NJEA, or Gardinier	\$10,000 or more	Open	No	No
		Closed +	Yes	Yes
	\$2,000	Open	No	No
		Closed +	Yes	Yes

**Please note that the NJEA grants are awarded the year after the listed program cycle*

+ A grant is closed when the final report has been submitted and approved by Sustainable Jersey



Available Funding

School Districts and Schools are considered separate applicants

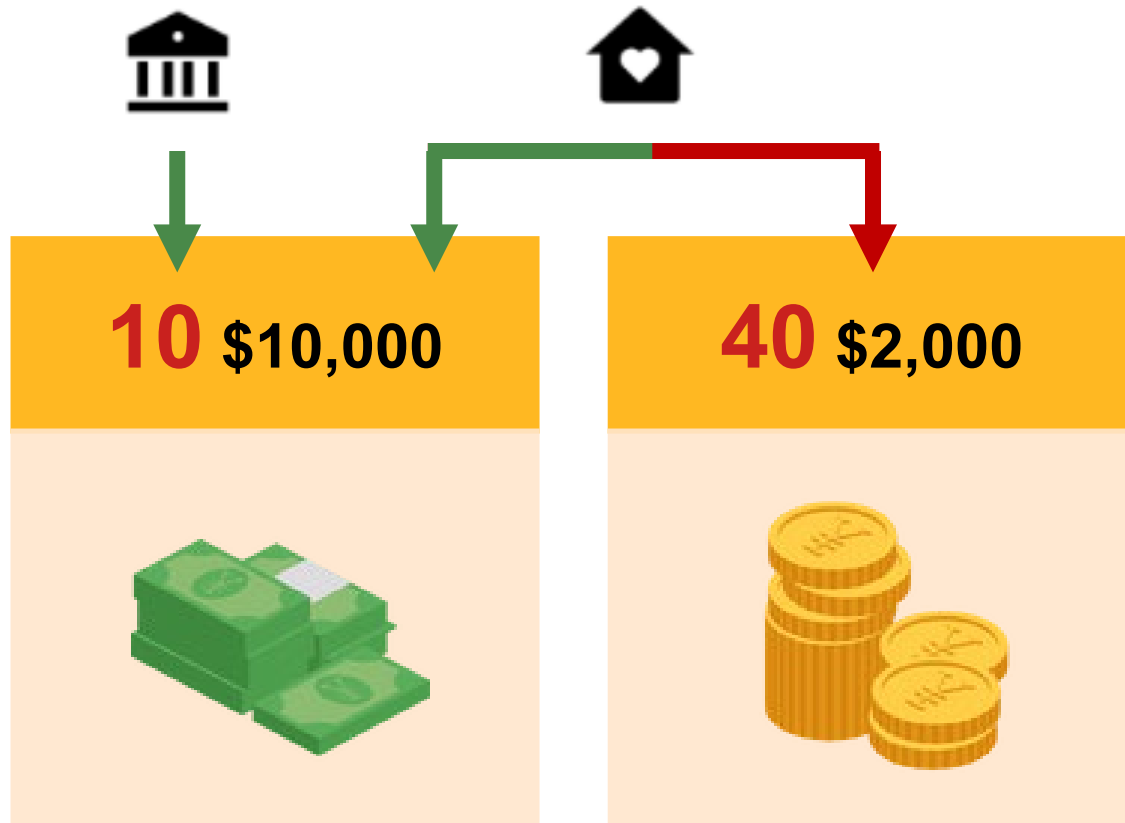
School Districts

- Can apply for one **LARGE** grant for district-level projects

Schools

- Can apply for one **LARGE** and one **SMALL** grant, but can only receive **ONE**

Collaboration with community organizations is encouraged!





Use of Funding

Funding Level	Use of Funds
LARGE and SMALL	Fund all or part of a project that will earn points toward a Sustainable Jersey for Schools <u>action</u> , including the <u>Innovative Project action</u> .
SMALL	Fund general operating support and direct expenses for green teams.
LARGE	Fund a project that leverages partnerships with community resources and includes an outreach component focused on promoting community awareness of the project.



Grant Project Ideas

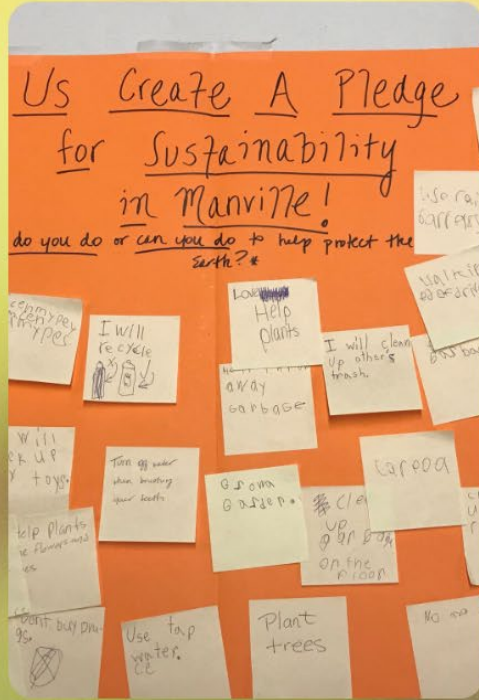
Utilize the [Previous Grant Cycle Awards](#) as a resource



Green Team Support



Annual Activities



Community Engagement



Promotion Materials



Green Fair

Community and School Gardens



Greenhouse



Traditional



Aquaponics



Indoor Tower

Sustainable Landscaping and Pollinators



Gardens



Certifications



Education



Beekeeping

STEAM / Sustainability Education



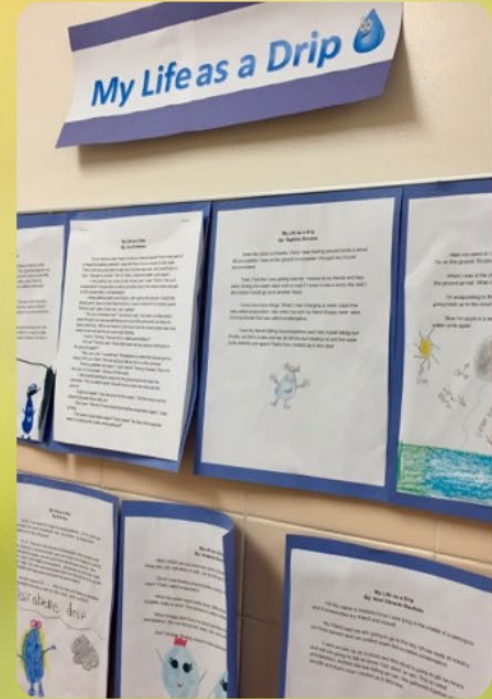
Outdoor Classrooms



Partnerships

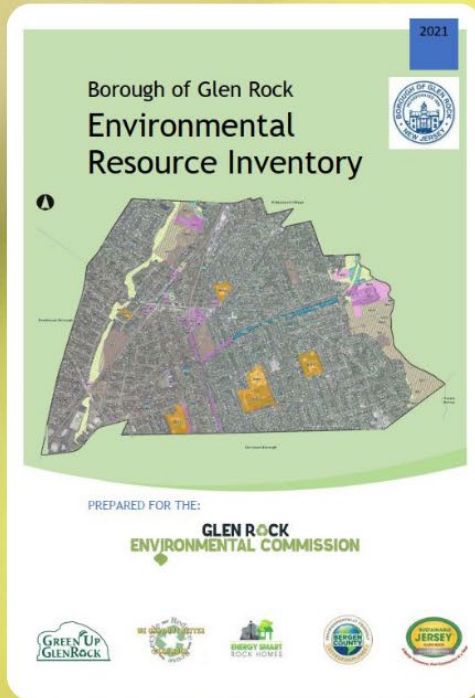


Campaigns

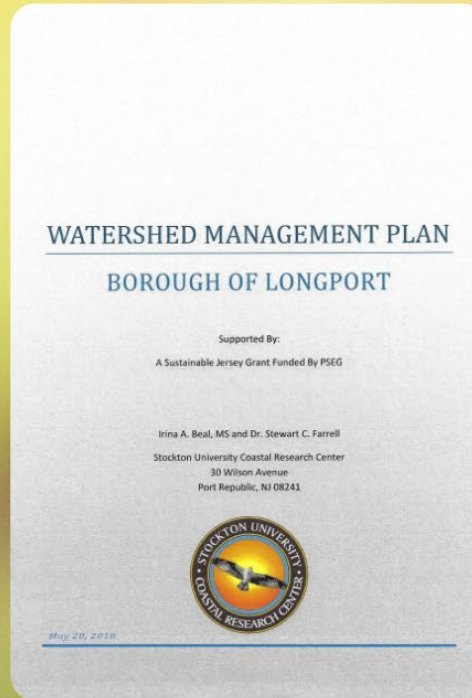


Curriculum Development

Planning, Studies and Inventories



ERI Watershed Management



Community Visioning



Creative Assets Inventory



Green Infrastructure and Stormwater Management



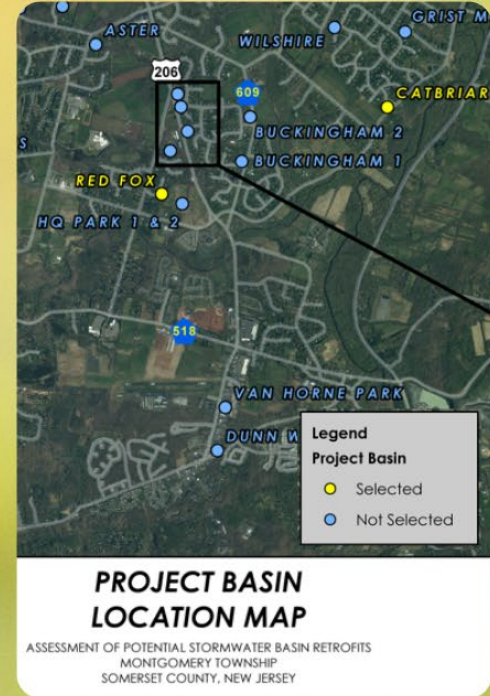
Bio-Swale



Rain Garden



Adopt-A-Drain



Planning

Recycling and Waste Management



Waste Audits



Improved Recycling



TerraCycle



Non-Mandated Collection

Health and Wellness



Promoting Physical Activity



Nutrition Education



Health Fairs



Anti-Idling Campaigns

Social and Emotional Learning



Culture and Climate Assessments



Flexible Seating



Mindfulness



Equity and Diversity



Energy Projects

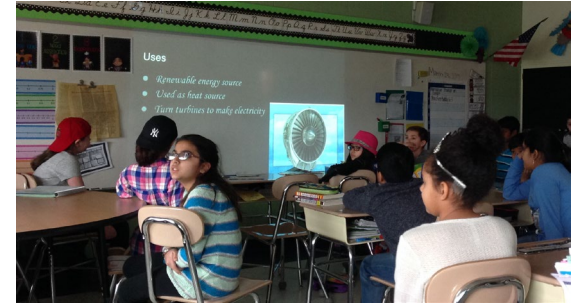


- Energy audits and incentive programs
 - Lighting upgrades, purchasing new EE equipment, etc.
- Electric vehicle charging stations
- Electric vehicle purchases



- Energy education, conservation, and or behavioral change projects

Interested in energy projects? Review the available funding and resources in Attachment 1 in the [Application Information Packet](#)





Projects for Points



- What you should consider:
 - The status of your green team—does it need financial support?
 - Identifying where you need financial assistance to complete a program **action**
 - Identifying a need within the school, district or community
 - Identify an innovative project that you cannot find funding for elsewhere
 - Identify an opportunity to partner with community stakeholders



**Solar Bus Shelter at
West Orange HS**



**Limitless Café at Howell
Twp MS North**



**Play It Again,
Toms River**



Other Resources

Grants & Technical Assistance

NJEA Cycle

- > Free Energy Technical Assistance for New Jersey School Districts and Municipalities
-

SJ-PSE&G Energy Efficiency Partnership Program

EmPowered Schools

Trees for Schools

- > Thinking about Applying for Grants?
-

- > Grant Recipient Information
-

Previous Recipients & Projects

Resources

- > Green Team Resources
-

- > Presentations
-

- > Resource Library
-

Publications



Energy Technical Assistance

Benefits of Energy Technical Assistance:

- Improve facility comfort and safety
- Lower school district carbon footprint
- Understand facility usage
- Save money on utility bills
- Gain points in Certification Program
- Most importantly, its **FREE**

Energy Tracking & Management

10 Points

• THIS ACTION HAS VARIABLE POINTS: 10, 20

Energy Efficiency for School Facilities

5 Points

 Priority

• THIS ACTION HAS VARIABLE POINTS: 5 — 50 • NON-COMPETITIVE FUNDING AVAILABLE

To request Energy Technical Assistance:

bit.ly/SJEnergyTAResultForm



Sustainable Jersey collects and processes sustainability related data for school districts.

The Data Center has data on student demographics, languages spoken at home, household characteristics, and information on alternative fuel vehicles organized by public school districts in New Jersey.

Data is updated on an ongoing basis.

Check the [School District Community Profile Data](#) on Sustainable Jersey for Schools for your school's data.

[illegible]




Sustainable Jersey Purchasing Resource Center: Designed to Support your Sustainable Transportation Goals

This **tool** assists you in purchasing key green technologies:

1. Electric vehicles (EVs)
2. Electric vehicle supply equipment (EVSE)

Coming Soon:

1. Green Grounds Equipment
2. EV Accessories
3. Building Management Systems



Sustainable Jersey Purchasing Resource Center Alternative Fuel Vehicles

Filter by Co-op/Contact ▾

Filter by Fuel Type ▾

Filter by Manufacturer ▾

Filter by Vehicle Type ▾

Filter by Price Range ▾

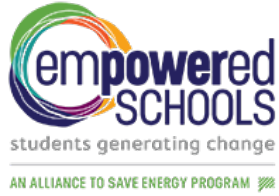
[Return to Purchasing Resource Center Home Page](#) [Reset Filters](#) [FAQ Page and Glossary](#)

Vehicle Information ▾	Vendor Information	Co-op/Contract	Vehicle Class	URL for Spec Sheet (for Co-op) OR Quote	Vehicle Price	Direct Pay Eligible	Delivered within three months?	Customization	Offer Expiration
Manufacturer: MacLaren's Mobile Model: The Legendary Ride Year: 2024 Color: Yellow Range: 250 miles	Vendor Name: Swayly's Electric Motors Point of Contact: Marshall Erikson Preferred Contact Method: marshall@swaylys.com	Educational Services Commission of NJ (Formerly Middlesex Regional Educational Services Commission)	Class 1 2	swaylyselectric.com/maclarens	Vehicle price: \$50,000 Destination price: \$1,800 Total purchase price: \$51,800	Yes	No	Wraps	Feb 24, 2025
Manufacturer: Gilmore Auto Model: Stars Hollow Cruiser Year: 2024 Color: Lorelei's Lavender Range: 200 miles	Vendor Name: Stars Hollow Vehicles Point of Contact: Luke Danoes Preferred Contact Method: luke@shvehicles.com	Educational Services Commission of NJ (Formerly Middlesex Regional Educational Services Commission)	Class 1 2	starihollowvehicles.com/orvis	Vehicle price: \$35,000 Destination price: \$1,200 Total purchase price: \$36,200	Yes	Yes	N/A	Jan 20, 2025
Manufacturer: Ford Model: Interceptor Year: 2024 Color: White Range: 250 miles	Tracy's Ford Tracy Woods woodst@tcnj.edu	Morris County Cooperative Pricing Council	Class 1 2	www.blahblah.pdf	Vehicle price: \$5 Destination price: \$1 Total purchase price: \$6	Yes	Yes	police lights	Dec 31, 2024

1 / 3 < >

Disclaimer: Sustainable Jersey has created the Purchasing Resource Center to serve as a guide for municipalities and schools in New Jersey who are pursuing green transportation technologies. The information provided in this resource should be verified by each user. It is important to note that Sustainable Jersey is not affiliated with any of the vendors listed on this resource, and does not sell any products or services. Sustainable Jersey is a non-profit organization that seeks to empower communities with the tools, training and financial incentives necessary to pursue critical sustainability initiatives. Learn more about [Sustainable Jersey](#).

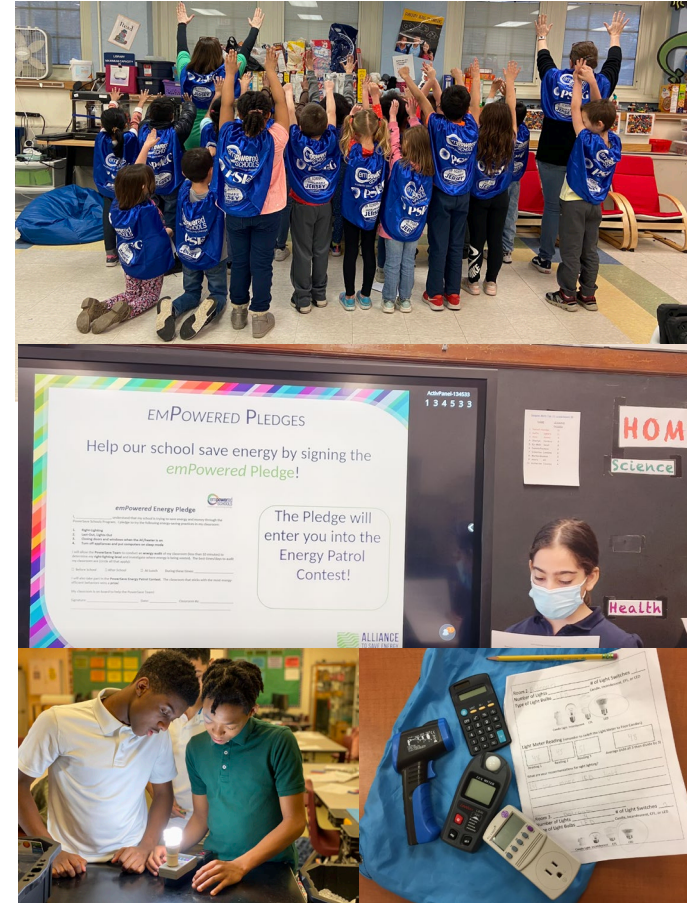
Adding Products to this Database
If you are a vendor for an eligible product and would like to add your offering to this database, please email info@sustainablejersey.com and instructions will be sent to you.



Empowered Schools

Receive free support and resources to educate PK-12 students about energy-related issues [\[link\]](#)

- Integrates STEAM principles to promote energy literacy through lesson plans, hands-on activities, and competitions
- Students will use the school building and their homes as learning labs to solve real-world problems and generate cultural change by making energy efficiency visible, important, and doable



Safe Routes Regional Coordinators

Safe Routes Regional Coordinators from eight Transportation Management Associations (TMAs) throughout New Jersey are ready, willing, and able to offer FREE technical assistance in Safe Routes programs in communities from all 21 counties.

Watch our short video to learn about how your Safe Routes Coordinator can help, and use the table and map provided below to determine which regional TMA applies to you.

For more information, [download and view the Safe Routes Resource Center information sheet](#). If you have any questions regarding identifying your regional coordinator, please contact us at: srts@ejb.rutgers.edu.

<https://www.saferoutesnj.org/find-your-srts-regional-coordinator/>



Participation in this program can help to earn points in the [Safe Routes to School District Policy](#) action, [Pedestrian and Bicycle Safety and Promotion Initiatives](#) action, and the [School Travel Plan for Walking and Biking](#) action.



Food Waste Resources

- Reduce, Recover & Recycle Food Waste - Sustainable Jersey Toolkit for PreK-12 Schools
 - This toolkit, produced by Sustainable Jersey and Rutgers Cooperative Extension, provides guidance, resources, and examples for addressing food waste while also promoting healthy food and addressing food insecurity.
 - It covers a range of topics that include: waste audits; reducing and recycling organic food / packaging waste; recovering uneaten food; training staff on and implementing food service best practices; educating and engaging students; running school-wide campaigns; and using school gardens to promote sustainable food knowledge and behaviors.

Reduce, Recover & Recycle Food Waste

Sustainable Jersey Toolkit for PreK-12 Schools





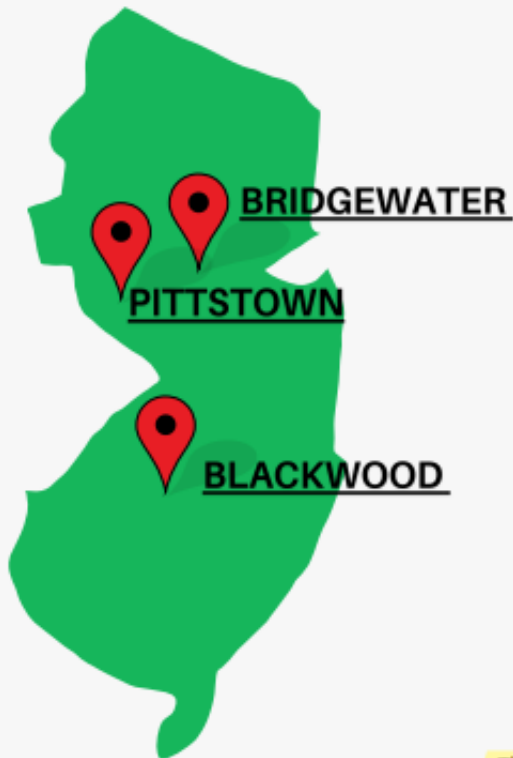
FARM TO SCHOOL

PROFESSIONAL DEVELOPMENT 101

Registration is now open!



<https://www.nj.gov/agriculture/farmtoschool/Registration%20Now%20Open%202025.pdf>



REGISTER HERE:

- October 8, 2025 [Click Here](#) for Bridgewater
- October 15, 2025 [Click Here](#) for Blackwood
- October 22, 2025 [Click Here](#) for Pittstown

WHO SHOULD ATTEND?

- 👤 Teachers
- 🍎 Food Service Staff
- 👤 School Community Partners

WHAT'S INCLUDED:

- ✓ Mini Farm to School Academy experience
- ✓ Actionable steps & planning tools
- ✓ Hands-on activities:
- ✓ Small group discussions
- ✓ Collaboration across roles & sectors
- 👤 Work together to share ideas, address challenges, and build sustainable Farm to School programs in your community.

The workshop is funded through the USDA Farm to School Formula Grant.





Climate Change Curriculum Resources

- In June 2020, New Jersey became the first state in the nation to incorporate climate change education across its K-12 learning standards.
 - View a list of resources on our website [here](#)
 - <https://subjecttoclimate.org/>
- Can get points for any of the Student Learning actions, which are a priority



Photos from Dale Rossetti, Allison Mulch, Dalton Farms, and NJ Audubon

New Jersey Climate Change Education Hub

The resources you and your school need to effectively teach climate change. These comprehensive resources are built around the official [NJ Student Learning Standards](#) and expand on the work of the New Jersey Department of Education.

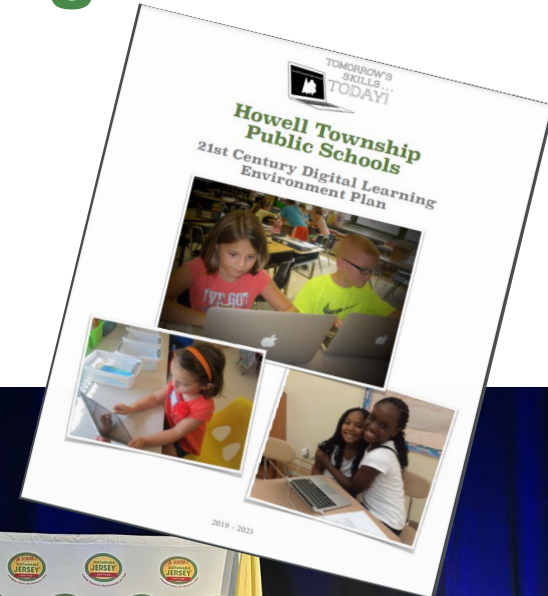




Digital Schools Program



- A Digital Schools Star embraces the mindful implementation of effective digital learning and communication tools, resources, and practices – a commitment that is evident in its mission, culture, classrooms, and interactions with its stakeholders
 - The program actions were recently revised—review updates [here](#).





Application Process

bit.ly/SJSNJEAgrants

Online Grant Application

Online Application Deadline: Monday, October 28, 2024 at 11:59 p.m.

Access the Online Grant Application

Make sure to record the email address and password for the application. Grant recipients will need that information to log into the system to complete reporting requirements.



Getting Started on an App

Sign Up

Enter an email address and choose a password to create a new account.

Email

Password

- Must contain at least one lowercase letter
- Must contain at least one uppercase letter
- Must contain one number
- Must be between 8 and 32 characters
- Must not be an email address

Confirm password

• Passwords must match

Sign Up

SIGN UP OR SIGN IN

Please note that **each individual school** will need its **own account**. Any **district applications** must be submitted through a **district account**.



Sign In

Email

Password

Log In

[Forgot your password?](#)

Need an Account?

Sign Up

Sustainable Jersey Grants Program Account

This grant account can be used from year to year to submit applications to be considered for funding by the Sustainable Jersey Grants Program. Below is more information on how to utilize your grant account.

Cycle Specific Portals

Note that this portal is specific to the NJEA grants- by signing in to this portal with your grant account, you will be able to review any past submissions and unsubmitted drafts. Copies of previously submitted



Homepage

Welcome, vollmerk@tcnj.edu

Thank you for signing up for a Sustainable Jersey Grants Program account! As the primary grant contact, you will use this account to submit grant applications in Sustainable Jersey Grants Program cycles and, if any of your applications are selected for funding, the required reporting requirements. Before moving forward with a grant application, you must first create a Profile for your grant account.

Please click "Create a Profile to Get Started" to begin. You can always edit your Profile by clicking "Edit".

You cannot move forward until you have completed your Profile.

Create a Profile to Get Started

Profile

Save Draft

Create Profile

Primary Application Contact

This is the primary person Sustainable Jersey will correspond with regarding this application and any subsequent award. The primary contact must be a school district employee. It cannot be a consultant.

Name *

Title *

Organization/School

Phone *

Please do not include parentheses () or dashes (-)

Phone Number Extension

Email *

PRIMARY CONTACT

MUST be a school district employee. If working with a consultant who plans on submitting the application on behalf of the school/district, they should submit it using a school/district grant account with a proper primary contact.

Note that school applicants that wish to apply for both a 10k and a 2k grant will need to submit **two** separate applications, but can use the same account and profile.



Thank you for filling out the profile form for your grant account. Below you will find buttons that will allow you to do the following:

- Use the "get started" button to create a new grant a
- Complete the reporting requirements associated with



Section One: School Grant Proposal

Please complete Section One: School Grant Proposal. **This section must be submitted by the end of the day on October 31, 2022.**

There are 41 days remaining to submit this.

Submit

NJEA Grant Proposal

Action Required

Open

Complete this form requesting information about your school/school district, school's/school district's Sustainable Jersey grants history, and your proposed project. This is considered your grant proposal and it is recommended that you review the [Application Information Packet](#) before completing this step.

SUBMITTING YOUR APPLICATION

The **Submit** button will turn **Green** and become clickable once you mark your application form for that section as complete. This is only possible once all required fields have been filled out. **You will need to click submit for each of the three application sections.** You can access the next section only after completing the one before it, but you will still be able to access any section to make changes before the application deadline (even if you submitted that section already).



NEW JERSEY
EDUCATION
ASSOCIATION

Application Resources



SUSTAINABLE JERSEY GRANTS PROGRAM

Does your school or district have an idea for a sustainability project that needs a source of funding? Consider applying for a Sustainable Jersey grant! Sustainable Jersey is pleased to announce that NJEA is contributing \$180,000 to support another cycle of the Sustainable Jersey Grants Program.



Available Grants

\$10,000 School or District Project Grants
\$2,000 School Green Team Support Grants

Eligibility Rules

New Jersey public schools participating in the Sustainable Jersey for Schools program with an established green team and NJEA local association. Previous grant recipients must meet additional requirements.

Learn More

Join us for our informational webinar on Tuesday, September 9, 2025, from 3:00PM to 4:30PM. Find the link to register via the QR Code.

Application Due

Friday, October 31, 2025

Apply Today

The online application and additional information can be accessed via the Grants tab on the Sustainable Jersey for Schools website (sustainablejerseyschools.com) or via the QR Code.



Flyer



2025-2026 NJEA Grants Cycle QuickStart Guide

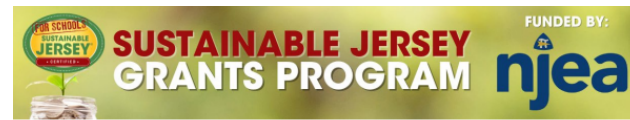
The Sustainable Jersey Grants Program is an important resource benefit available to any NJ public school or school district participating in the Sustainable Jersey for Schools program. Please consider taking advantage of the annual funding cycles in order to support your school's journey to becoming more sustainable. This QuickStart Guide provides a basic overview of the 2025-2026 NJEA Grants Cycle. More detailed cycle information can be found in the [Application Information Packet](#). Apply online [here](#).

APPLICATIONS ARE DUE BY 11:59PM ON OCTOBER 31, 2025

Tables of Contents – "Click" on a Section Title to Jump to that Page

Online Application.....	2
Eligibility Rules	2
Eligible Applicants	2
Can I Submit Multiple Applications?.....	3
School Applicants	3
District Applicants	3
Previous Grant Recipients	3
Potential Grant Projects	4
Eligible Projects	4
Need Help Thinking of a Project?.....	4
Not Sure if Your Project Idea is Eligible?	4
Ineligible Projects	4
What About Energy Projects?	4
Grant Expenses	4
Eligible Grant Expenses	4
\$10,000 Grants	5
\$2,000 Grants	5
Ineligible Expenses.....	5
Application Sections	5
Section One: School Grant Proposal.....	6
Section Two: Sustainable Jersey for Schools Program Status	6
Section Three: NJEA Local Association President Correspondence	7
Section Four: Grant Authorization Documentation	7

QuickStart Guide



Sustainable Jersey Grants Program Funded by the New Jersey Education Association

2025 Application Information Packet for School Districts and Schools

Table of Contents

A. Background	2	Green Team Requirements	15
B. Eligibility Requirements	3	Don't Have an Active Green Team?	16
Standard Eligibility Rules	3	Section Three: NJEA Local Association President Correspondence	16
Additional Eligibility Rules for Previous Grant Recipients.....	3	Section Four: Grant Authorization Documentation.....	16
Limitations on the Number of Application Submissions.....	4	Grant Authorization Resolution and Letter Templates.....	16
C. Use of Grant Funding	4	Grant Resolution Recommendations.....	17
Energy Projects.....	5	G. Selection Process	17
\$10,000 District or School Project Grants	5	\$10,000 Project Grant Proposals	17
\$2,000 School Project or Green Team Support Grants	5	\$2,000 Project or Green Team Support Grant Proposals	17
D. Project Ideas.....	5	H. Grant Awards and Additional Terms.....	18
Energy-Related Projects.....	6	Grant Awards	18
E. Online Application Portal	6	Additional Terms	18
Creating an Account	7	Project Promotion & Recognition	18
F. Grant Application Form Sections	8	Project Photos	18
Section One: Grant Proposal	9	I. Grant Recipient Reporting Requirements	19
Preliminary Questions.....	9	\$10,000 Project Grant Awards	19
Sustainable Jersey Grant History	9	\$2,000 Project or Green Team Support Grant Awards	19
Applicant Information	10	Attachment 1: Energy Incentive Programs	20
Application Contacts	11	Attachment 2: Grant Application Proposed Project Action Plan.....	23
Grant Proposal	12	Attachment 3: Budget Template.....	24
Only \$10,000 grant applicants are required to provide the following.....	13	Attachment 4: \$10,000 Grant Proposal Evaluation Criteria	25
Optional Information	14		
Section Two: Sustainable Jersey for Schools Program Status	14		
Sustainable Jersey Status Types.....	15		

App Info Packet



Application Sections

Grant Account and Profile

School Grant Proposal – due 10/31/25

1. Requested Funding Amount

4. Application Contacts

2. Sustainable Jersey Grant History

5. Grant Proposal

3. Applicant Information

6. Optional Information

Current Sustainable Jersey for Schools Status - due 10/31/25

1. Current Status in the SJS Program

2. Green Team Documentation*

NJEA Local Association President Correspondence - due 10/31/25

1. Evidence of NJEA Local Association President Correspondence


Grant Authorization Resolution – due 12/5/25

1. Authorization to submit grant application


*Not required from Sustainable Jersey schools **currently certified** in the Sustainable Jersey for Schools program (or districts with at least one certified school)



Application Walkthrough



SUSTAINABLE JERSEY GRANTS PROGRAM

FUNDED BY: 

Sustainable Jersey Grants Program Account

This grant account can be used from year to year to submit applications to be considered for funding by the Sustainable Jersey Grants Program. Below is more information on how to utilize your grant account.

Cycle Specific Portals

Note that this portal is specific to the NJEA grants-
-by signing in to this portal with your grant account,
you will be able to review any past submissions and
unsubmitted drafts.

Sign In

Email

Password

[Log In](#) [Forgot your password?](#)

Need an Account?

[Sign Up](#)



Section One: School Grant Proposal

Preliminary Questions

- Are you submitting an application as a school district or school?
 - **School District OR School**
- Is your school district/school affiliated with NJEA?
 - **Yes OR No**
- Which grant are you applying for?
 - **\$2,000 OR \$10,000**

Must answer these questions first in order to populate the application form with questions specific to the grant you are applying for.



Section One: School Grant Proposal

SJ Grant History

- **Previously-awarded grants** from the Sustainable Jersey Grants Program can affect your school or district's eligibility to apply for another grant
 - Review the eligibility chart for previous grant recipients
 - Schools are eligible to have two open grants at one time—one 10k and one 2k grant

As long as the project is finished, a grant can be closed out by submitting a final report. Contact us to see if your school or district has any open grants and what your close-out options are. It may be possible to close out a grant in time.



Section One: School Grant Proposal

SJ Grant History

- **Outstanding Grants** (Open Past Original Reporting Deadline)
 - Unable to apply for any grants until the outstanding grant is closed
 - Still the case if the previously-awarded grant has an extension
- Open grants in an individual school do not affect the district's or any other schools' eligibility to apply for a grant—all are considered separate entities



Section One: School Grant Proposal

Applicant Information

- School/District Name and County

- Search for your school/district name via the search bar and this information will auto-fill

Please note that schools/districts with the same name may have to try clicking on more than one name before finding the one assigned to the correct county.

District Information *

Absecon Public Schools

Academy Charter High School

Academy For Urban Leadership Charter School

Alexandria Township School District

Allamuchy Township School District

Allendale Public School District



Section One: School Grant Proposal

Applicant Information – All Applicants

- **NJDOE School District Code**
- **District Employer Identification Number (EIN)**
 - Ask your fiscal contact for this
- **Number of Students the District Serves**
- **Percentage of Students in District on Free or Reduced Lunch**

Can get all of this information from the most recent Fall Enrollment Reports via the NJDOE website [here](#).



Section One: School Grant Proposal

Applicant Information – School Applicants Only

- Type of School Applicant (Elementary, Middle, or High)
- School Student Population
 - Ask your fiscal contact for this
- Percentage of Students in School on Free or Reduced Lunch

Can get all of this information from the most recent Fall Enrollment Reports via the NJDOE website [here](#).



Section One: School Grant Proposal

Applicant Contacts

- Provide the name, email address, phone number, and phone number extension (if applicable) for the following contacts:
 - Superintendent **(title not needed)**
 - Principal **(only for School Applicants)**
 - Fiscal Contact **(will also need mailing address)**
 - NJEA Local Association President
 - Media Contact **(optional)**

Community engagement is important, so it is good to have someone responsible for project promotion.



Section One: School Grant Proposal

Grant Proposal

- **All Grant Applications Must Include:**
 - Project Title and Brief Description
 - Action Plan and Timeline
 - Can use the template available [here](#)
 - Budget Narrative and Detailed Project Budget
 - Can use the budget template available [here](#)

Before getting started on the proposal, review the evaluation criteria for \$2,000 grants [here](#).



Section One: School Grant Proposal

Grant Proposal

- Only **10k** Grant Applications Must Include:
 - Project Team
 - Community Engagement
 - Project Impact and Evaluation

Before getting started on the proposal, review the evaluation criteria for \$10,000 grants [here](#). Note that the evaluation process for the large grants is more extensive than that for the smaller grants.



Section Two: Current SJS Status

Check Your School's/District's Current Program Status

- Did you check the [Participating Schools and Districts Map](#)?
- What does the map say your school's/district's status in the Sustainable Jersey for Schools program is?
 - **Schools:** Not Registered, Registered, Certified Bronze, Certified Silver
 - **District:** Not Registered, Registered (Districts cannot be certified)



Section Two: Current SJS Status

Check Your School's/District's Current Program Status

- **Previously certified?**

- Note certification only lasts for three years and can be expired at the time of the grant application

- **Not registered?**

- Registering is free and easy. You can learn more [here](#).
- If you are at least in the process of registering by 10/31, your application will still be considered.



Section Two: Current SJS Status

Green Team Documentation

- Currently certified schools or districts with at least one certified school **DO NOT** need to provide this information
- Otherwise, we need the following green team documentation:
 - List of green team members
 - Summary of green team activities

List of Green Team Members

- | | |
|--------------------------------------|----------------------|
| • First Name, Last Name, Affiliation | NO OTHER INFORMATION |
| • xxx | |
| • xxx | |
| • xxx | |
| • xxx | |

(if just forming, it is okay if this mostly consists of the project team)

Summary of Green Team Activities

A brief description of what your green team has been working on in the past year. Explain what actions you have identified and are working towards completing. Explain what community activities you have tabled at, participated in, or hosted. Can be a bulleted list. Can also upload your green team yearly report, if you have one.

(if just getting started, explain future plans and goals for your green team)

You can either create a district or school green team or appoint an existing group to act as the green team. District green teams are created by resolution whereas school ones can be created via a letter from the principal. You can follow the instructions available [here](#). It is okay if your green team is the same as your project team.



Section Three: NJEA Local Association President Correspondence

- Please upload evidence that your NJEA Local Association President has been informed of the green team's intent to submit the grant application.
 - This can include either a copy of the email that was sent to, or a letter of support from, your NJEA Local Association President.



While it would be great to have your NJEA Local Association President on the project team, you are only required to show proof that you have reached out to the President to let them know of the grant application.



Section Four: Grant Authorization Doc

- Upload either a **School Board Resolution** OR a letter from the superintendent, business administrator, or school principal
 - A template resolution can be found [here](#) and a template letter [here](#)
 - Can use the same resolution for a 10k and 2k grant application
 - Must be signed and dated
 - **Must be submitted by 12/5/25**

Resolution of Support Authorizing the Submission of a Sustainable Jersey for Schools Grant Application

Some school districts have requested a sample of the resolution that must accompany their Sustainable Jersey for Schools Small Grants Program application. The purpose of the resolution is to affirm that the Board of Education approves of the proposed grant project/activities. A signed and certified resolution should be uploaded through the online grant application. Any standard resolution in support of applying for a grant will suffice. We do not require that you use this format.

SAMPLE RESOLUTION [Insert Name of School Board]

Resolution of Support from [Insert Name of School Board] Authorizing the Sustainable Jersey for Schools Small Grant Application

WHEREAS, Sustainability means using resources wisely, saving money and reducing our impact on the environment, all of which will ensure the future health, safety, and prosperity of our children; and,

WHEREAS, The _____ Board of seeks to support and work with school staff and administrators, students and parents to ensure a safe and healthy environment for students by encouraging our school community to implement sustainable, energy-smart, eco-friendly and cost-effective solutions.

WHEREAS, [Insert Name of School Board] is participating in the Sustainable Jersey for Schools Program; and

WHEREAS, one of the purposes of the Sustainable Jersey for Schools Program is to provide resources to school districts to make progress on sustainability issues, and they have created a grant program called the Sustainable Jersey for Schools Small Grants Program;



SUSTAINABLE JERSEY

DATE
Kaitlyn Volmer
Grants Program Coordinator
Sustainable Jersey for Schools

Dear Ms. Volmer:

This letter shall serve as documentation of the authorization for **SCHOOL NAME HERE** to submit a **FUNDING LEVEL HERE** grant application for the **PROGRAM YEAR** Sustainable Jersey for Schools Grants Program funded by NJEA. As the **PRINCIPAL/BUSINESS ADMINISTRATOR/SUPERINTENDENT OF SCHOOLS**, I fully support this application and authorize its **submission** on behalf of the school community.

If selected for the grant award, we will **BRIEF MENTION OF PROJECT**.

Thank you for your consideration.

Sincerely,

SIGNATURE

NAME
POSITION
SCHOOL/DISTRICT

GRANT AUTHORIZATION LETTER TEMPLATE

NOTE: The above template letter includes all the information we need for this letter to serve as the authorization document for the grant application. However, please feel free to treat this authorization letter also as a letter of support. Your principal, business administrator, or superintendent are free to provide more details about the project, the vision behind it, and the impacts it would have on the school community. While not required, the Blue Ribbon Selection Committee looks favorably upon letters of support and signs that the school community is committed to the grant project.

This resolution is **DIFFERENT** than the resolution required to register in the Sustainable Jersey for Schools certification program OR to establish a green team.



Applications Under Review

Staff Application : Test

Created on 09/19/2023

Submitted

Sustainable Jersey Grant Application: Submission

External

Inbox x



Sustainable Jersey Grants Program <no-reply@email.zenginehq.com>
to me ▾

2:07 PM (3 minutes ago)



Hello Kaitlyn Vollmer,

Thank you for submitting a Sustainable Jersey grant application in the 2024 school grants cycle funded by NJEA. This email serves as confirmation that your application was received by Sustainable Jersey and is currently undergoing the eligibility prescreening process.

We suggest saving a copy of your completed grant application as a PDF to keep for your records. Follow the instructions available [here](#). This example references the municipal PSEG-funded cycle, but these instructions can be used for the NJEA cycle as well.

If additional information is required for your application, staff will reach out. You will be notified if your application meets the eligibility standards. You will be notified on whether or not you will be awarded the grant by mid-February. In the meantime, if you have any questions about your grant application or the [Sustainable Jersey Grants Program](#), please do not hesitate to reach out to Kaitlyn Vollmer at 609-771-3189 or at grants@sustainablejersey.com

Best,

Sustainable Jersey Grants Program



Selection Process

- All **\$10,000** proposals will be reviewed by a Blue Ribbon Selection Committee composed of experts from the public and private sectors.
- All **\$2,000** grants will be awarded based on the green team's commitment to advancing sustainability initiatives in the school and how the proposed activities will lead to the successful completion of specific Sustainable Jersey for Schools actions.
- Other factors for consideration include geographic spread, team capacity, project diversity, past awards and community need.



Up to 50% of the grant funds will be reserved for certified schools and districts with at least one certified school



\$10,000 Evaluation Criteria

**Project
Description**

15 Points

**Project
Team
Members**

10 Points

**Action Plan
& Timeline**

10 Points

**Community
Engagement**

20 Points

**Project
Impact and
Evaluation**

25 Points

Budget

20 Points



\$2,000 Evaluation Criteria

Project Description

Budget

Action Plan & Timeline

- Efforts the school makes towards achieving Sustainable Jersey for Schools certification are considered along with other factors
- Note that the \$2,000 grant applications request less information than the \$10,000 grant applications



Project Description

- The description concisely summarizes the specific project to be funded by the grant award

TIP: Project Selection

- Think “outside the box”
- Identify all requirements associated with the project
- Consider community dynamics when crafting your proposal so it’s successful
- Consult stakeholders before settling on a plan
- Understand your capacity





Penns Grove High School Example

- Clear, concise, and compelling: framed aquaponics as a solution to food insecurity in a designated food desert.
- Connected directly to sustainable farming practices and STEM education.

→ Strong case for full points.





Project Team Members

- The designated project team appears qualified to undertake the proposed project
- The project team includes representation from district, school, and community stakeholder groups that will be involved in or impacted by the implementation of the proposed project

TIP: Building Your Team

- Include representation from stakeholder groups that will be involved/impacted by the implementation of the project like school staff, students, and parents.





Penns Grove High School Example

- Diverse team: superintendent, curriculum director, science/math supervisors, principal, environmental science teachers, custodial staff, and food services director
- Included NJEA representatives and community partners (Exchange Club, municipal green team).

→ Demonstrated capacity and broad expertise.





Action Plan & Timeline

- The proposed project action plan addresses the steps needed to successfully complete the project
- Target completion dates are realistic and will enable the project to be completed within the 18-month performance period



TIP: Project Planning/Implementation

- Consider administrative delays, such as the procurement process and plan time for paperwork
- Research the products you plan to use
- Plan ahead for summer months/downtime
- Set deadlines and adhere to them
- Spend time and resources to train volunteers
- Try to plan for the unexpected – always have a “plan B”
- Include plans for how the success of the project will be shared with the school community



Action Plan & Timeline

- Implementation steps should start no earlier than mid-March 2026. Planning steps can occur earlier, but no grant funds can be spent beforehand
- Events where the grant will be promoted, such as a ribbon cutting ceremony, and materials will be distributed are identified





Action Plan & Timeline

- Template available! Not required, but highly recommended applicants use it.
- At least take a look to make sure you are covering all of the steps/tasks/areas that the selection committee will be looking for when evaluating this section.
- It's okay if you use "Month 1, Month 2..." etc., as needed but make sure to have an anticipated start and end date.



Grant Application Proposed Project Action Plan

Please use this form to outline the specific steps or tasks needed to complete the proposed project. These steps include project planning, implementation, community outreach and evaluation. Identify the target completion date for each step to ensure the project can be accomplished by the end of the performance period. Include plans for ribbon cutting ceremonies and milestone events. Implementation steps should NOT begin until after the grant is awarded at the press announcement event. Additional lines can be added.

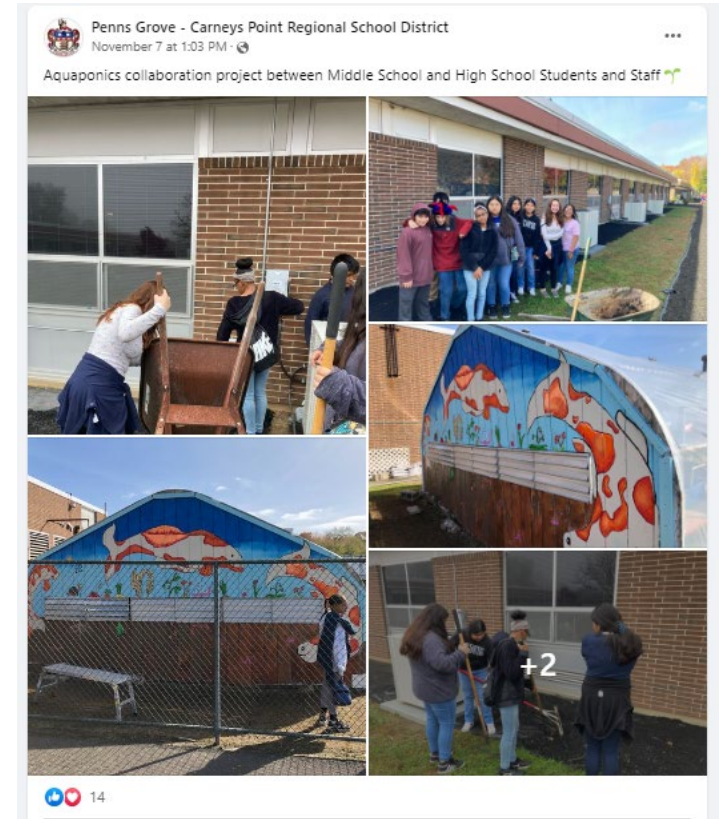
Steps/Tasks that the Project Team will take to Complete the Proposed Grant Project	Team Member Responsible	Target Completion Date
Planning Steps		
1.		
2.		
3.		
Implementation Steps		
1.		
2.		
3.		
Community Engagement Activities		
1.		
2.		
3.		
Evaluation and Reporting Steps		
1.		
2.		
3.		

Project Promotion – Events Where Promotional Materials With Sponsor Recognition Are Distributed		
Name of Event	Materials	Date
1.		
2.		
3.		
Proposed Date of Ribbon Cutting Ceremony (if applicable)		



Penns Grove High School Example

- Detailed action plan: outlined steps for planning, building, curriculum integration, outreach, and evaluation
 - Identified specific milestones (e.g., ribbon-cutting, School Board presentations).
- Realistic and achievable within the 18-month performance window.





Community Engagement

- Capitalize on collaborations between community stakeholders including representatives from the schools, municipal and county agencies, civic or community-based organizations, non-profits, professional organizations and local businesses.
- Expand on what is in action plan and timeline.

TIP: Bringing in other Stakeholders

- Recruit volunteers early on
- Identify and involve all relevant parties from the beginning
- Keep meetings short, timely, meaningful and efficient
- Think of how the project will affect other community groups and see if they want to get involved



Community Engagement

- Events where the grant will be promoted, such as a ribbon cutting ceremony, and materials will be distributed are identified

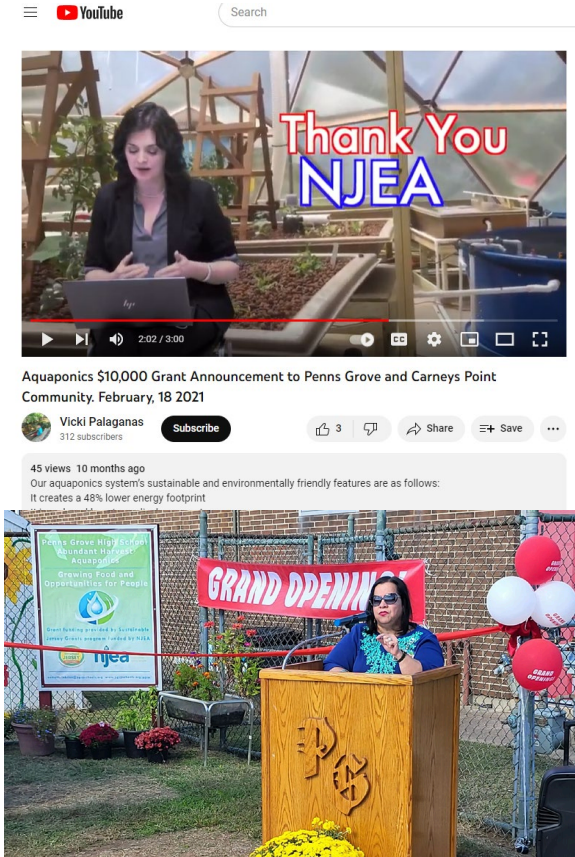




<https://youtu.be/R0JpYHoV1cM>

Penns Grove High School Example

- Planned wide promotion: social media, website, school board updates, signage with NJEA logos, ribbon-cutting.
 - Brought in students, parents, staff, local leaders, and organizations to ensure visibility and ownership
- High score for deep and varied engagement.





Project Impact and Evaluation

- The project will augment existing green team efforts and support certification efforts
- The proposed project is unique, innovative and addresses a specific need in the community
- What the project hopes to accomplish is clear and relevant background information is provided to better understand the true impact of the project

TIP: Identify Impacts

- Propose a project that capitalizes on collaborations between school and municipal or district/school stakeholders





Project Impact and Evaluation

- Who will benefit from the proposed project (students, school staff, families, community) and how is clearly articulated
- Project outcomes will be evaluated





<https://youtu.be/R0JpYHoV1cM>

Penns Grove High School Example

- Community is a food desert (supermarket closed; reliance on Dollar Store).
- Highlighted nutritional inequality and Salem County's 30%+ obesity rate.
- Connected to nutrition, equity, sustainability education, and certification.

→ This was their strongest area — very likely scored near full points.





Budget

- The Budget Narrative clearly summarizes project expenses and identifies all the sources of funding needed to complete the proposed project, including in-kind contributions such as volunteer hours
- The budget is realistic, costs are justified and resource contributions, including in-kind, have a reasonable value

TIP: Tracking Expenses

- Discuss accounting and procurement with your business office ahead of time.
- Plan to create a designated grant account to track expenses.
- If completing an outreach project, justify use of promotional materials
- Include shipping costs
- Remember that the budget is an estimate and that modifications can be made if in receipt of the grant award



Budget

- Promotional items including “give-aways” (i.e. T-shirts, water bottles, reusable bags), refreshments, incentives or awards do not comprise more than \$1,000 for 10k projects and \$200 for 2k projects
- It is clear that all additional funding besides the grant is in-hand or committed
- The project leverages no or low cost resources to cost-effectively complete the proposed project

TIP: Leveraging Other Resources

- Consider asking community members and local businesses for donations, whether it be funding or project materials, especially for promotional materials
- Can include money for a sign, which is required for applicable projects and can likely be donated
- Review the resources in the actions on the website for other opportunities to leverage resources





Budget

- Template available! Not required, but highly recommended applicants use it.
- The detailed project budget is consistent with the Budget Narrative and clearly identifies the eligible project expenses that will be billed to the grant
- Make sure grant funds column adds to grant award—cannot award grants less than 2k or 10k



Sustainable Jersey Grants Program Budget Template



Matching or in-kind contributions are encouraged, but not required. If the proposed project will be 100% funded by the grant, do not enter anything in the Other Funding Sources column. If other funding will be used to complete the project in conjunction with the grant, please identify the amount in the Other Funding Source column. Identify the source of the additional funding, if it has been secured, and any other details deemed necessary to include in the Budget Narrative. Any NJCEP, utility, or other incentives should be included. In order to upload your budget to the grant application, you must convert the excel document into a PDF. Please make sure that the rows and columns in the PDF are not cut off due to page breaks. To ensure this, select the "fit to paper width" option when saving as a PDF.

Applicant Name:

A. SALARIES, WAGES, AND FRINGE BENEFITS

Name	Title	Hours	Sustainable Jersey Grant Funded	Other Funding Sources (cash, incentives or in-kind)	Total Cost
					\$ -
					\$ -
Total Municipal Salaries			\$ -	\$ -	\$ -

B. SUBCONTRACTORS/CONSULTANT COSTS

Subcontractor/Consultant	Role in Project	Period of Performance	Sustainable Jersey Grant Funded	Other Funding Sources (cash, incentives or in-kind)	Total Cost
					\$ -
					\$ -
Total Subcontractor/Consultant Cost			\$ -	\$ -	\$ -

C. ITEMIZED EQUIPMENT

Item	Unit Cost	Quantity	Sustainable Jersey Grant Funded	Other Funding Sources (cash, incentives or in-kind)	Total Cost
					\$ -
					\$ -
Total Equipment Cost			\$ -	\$ -	\$ -

D. ITEMIZED SUPPLIES

Item	Unit Cost	Quantity	Sustainable Jersey Grant Funded	Other Funding Sources (cash, incentives or in-kind)	Total Cost
					\$ -
					\$ -
Total Cost of Supplies			\$ -	\$ -	\$ -

E. OTHER ITEMIZED EXPENSES

Item	Justification	Quantity	Sustainable Jersey Grant Funded	Other Funding Sources (cash, incentives or in-kind)	Total Cost
					\$ -
					\$ -
Total Other Expenses			\$ -	\$ -	\$ -

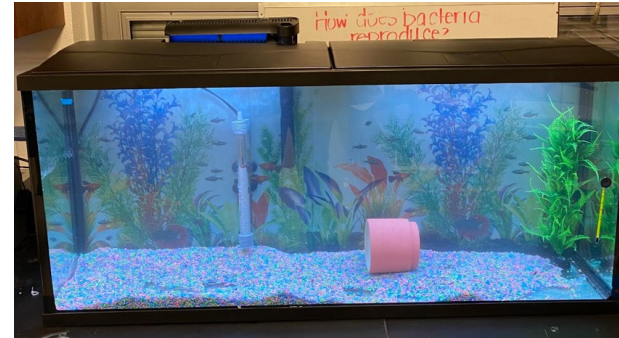
TOTAL PROPOSED BUDGET			\$ -	\$ -	\$ -
-----------------------	--	--	------	------	------



<https://youtu.be/R0JpYHoV1cM>

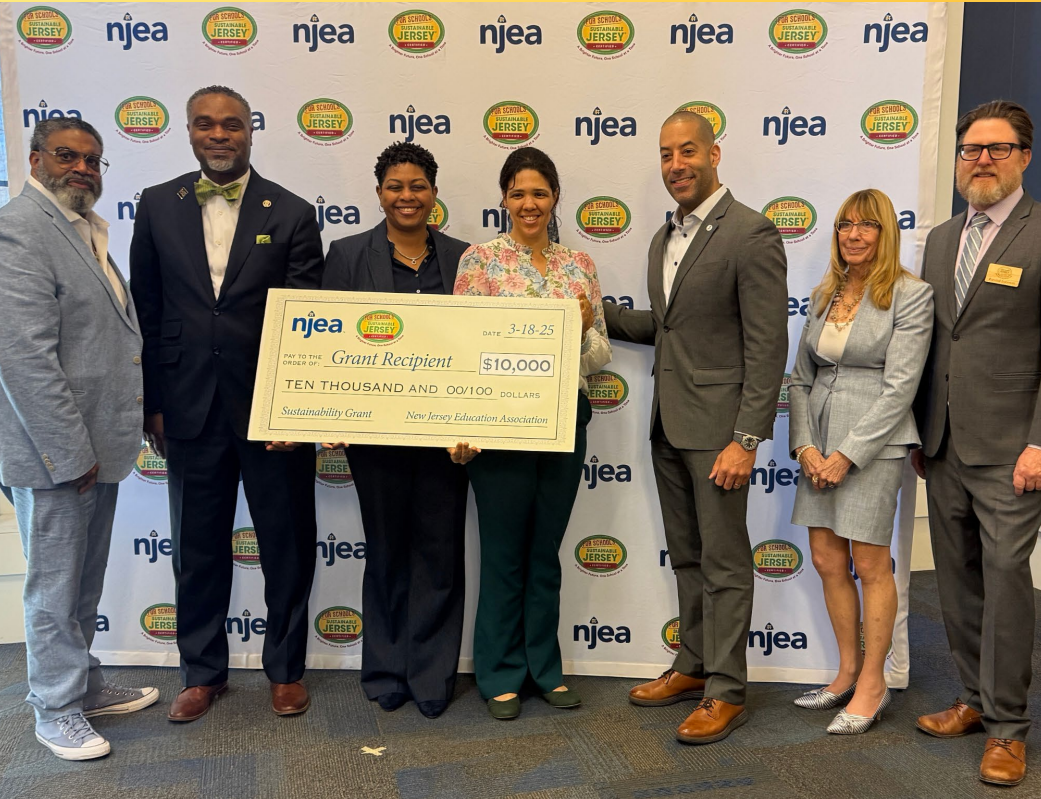
Penns Grove High School Example

- Budget was itemized and eligible, listing tanks, filters, rafts, sump tanks, greenhouse structure.
 - Realistic, with in-kind contributions and community support strengthening feasibility
- Showed responsible and strategic use of grant funds.





Grant Awards





Grant Awards

Grant recipients will be announced:

Mid-February 2026


Grant Event:
Mid-March

- Announcement event with free breakfast, networking opportunity, and chance to get your photo taken with the program sponsors
- \$2,000 grants will be mailed in full to the attention of the application's fiscal contact
- \$10,000 grantees will receive an initial payment of **half the award amount with an understanding that they must front the second half of the grant**
 - The final payment of the remaining half will be paid to the school/district upon satisfactory approval of the final report



Reporting Requirements

- \$10,000 grants will submit an interim report midway through the project and a final report after an 18 month performance period
 - **Note that the second half of the grant funds will not be released until the project is complete and final report approved**
- \$2,000 grants will submit a final report after a 12 month performance period
- Take pictures, keep track of expenses, and be sure to acknowledge the sponsors—will need this documentation for the report



Sustainable Jersey Grants Program Account

This grant account can be used from year to year to submit applications to be considered for funding by the Sustainable Jersey Grants Program. Below is more information on how to utilize your grant account.

[Cycle Specific Portals](#)

Note that this portal is specific to the NJEA grants—by signing in to this portal with your grant account, you will be able to review any past submissions and unsubmitted drafts.

Sign In

Email

Password

[Log In](#) [Forgot your password?](#)

Need an Account?

[Sign Up](#)

Make sure to record the email address and password for the application. Grant recipients will need that information to log into the system to complete reporting requirements.



Application Tips



Consider these 4 tips to increase your chances of receiving a grant

- Schools should apply for both a small and a large grant
 - Can copy and paste information; just need to change the budget and action plan and timeline
- Include the community and stakeholders in as many of the steps to complete the project as possible, including the planning phase
 - Invite municipal green team members, local businesses, and organizations
- Identify sources of in-kind donations of time, labor, and funding to show that your school community has skin in the game
- Be detailed—too much information is better than too little



Timeline

<u>Timeframe</u>	<u>Action</u>
Wednesday September 10, 2025	Webinar presentation & recording posted on website
Friday October 31, 2025	Sections One, Two, and Three of all grant applications due
Friday December 5, 2025	Section Four: Grant Authorization Doc due Should also aim to be registered, have a green team, and have closed out outstanding grants by this time
Mid-February	Recipient/non-recipient notification
Mid-March	Grant announcement event and funds distributed



Contact Us!



Questions about the grants program?

Kaitlyn Vollmer

Grants Program Manager

grants@sustainablejersey.com

609-771-3189



Questions about the certification program?

JoAnna Contarino

Program Coordinator

schools@sustainablejersey.com

609-771-3427



Thank You!

To ask questions, please either:

- Raise your hand (to ask question verbally)
 - Make sure to unmute yourself using the green microphone button
 - If calling in via the telephone, make sure you input the audio code: **421-874-651**
- Type your question in the question box





Upcoming Events

ABOUTNEWSSUPPORT USCONTACT USHOME

RegisterSign in

1

CertificationActionsGrants & Technical AssistanceEventsResourcesGet Involved

SUSTAINABLE JERSEY GRANTS PROGRAM

Cycle Funded By: Sections 1-3 of the Application are Due: Friday, October 31

The NJEA Grants Cycle is Now Open!
Accepting 2k and 10k applications. An Informational Webinar will be held on Tuesday, September 9, 2025.

Sustainable Jersey for Schools Certification Program

1223	369	10,614
Participating	Certified	Actions

View Districts, Schools and Approved Actions

ABOUTNEWSSUPPORT USCONTACT USHOME

RegisterSign in

1

CertificationActionsGrants & Technical AssistanceEventsResourcesGet Involved

Calendar

- NJ Student Climate Challenge
- Municipal Events
- Conference, Training & Webinar Presentations

Sustainable Jersey for Schools Events

Sustainable Jersey for Schools and its program partners regularly host trainings and events that support progress toward Sustainable Jersey for Schools certification. In general, events posted on the calendar are FREE or of minimal cost.

Post an Event

You can post FREE events that are open to the general public that would be of interest to the Sustainable Jersey for Schools community. Sustainable Jersey for Schools staff review all event submissions and will follow up if more information is needed.

[Post Event](#)

NOTE: You must have a Sustainable Jersey for Schools website account and be signed into the website to post an event. Sign-in or sign up [here](#).

Past Events

Presentations from Sustainable Jersey for Schools events, trainings and webinars can be found [here](#)

Filter Events by:

Location	Range
All Locations	Upcoming Events
Category	Type



APPLYING FOR CERTIFICATION IN 2026?

Submission Deadline:

#1

January 12

#2

March 23

#3

June 15

bit.ly/Schools2026CertCycle



SCHOOL CULTURE & CLIMATE NEEDS ASSESSMENT

WEBINAR - SEP. 16, 2025 2:30 PM - 3:30 PM

Learn More & Register:

<https://bit.ly/4fWZmis>





DIGITAL SCHOOLS STAR RECOGNITION

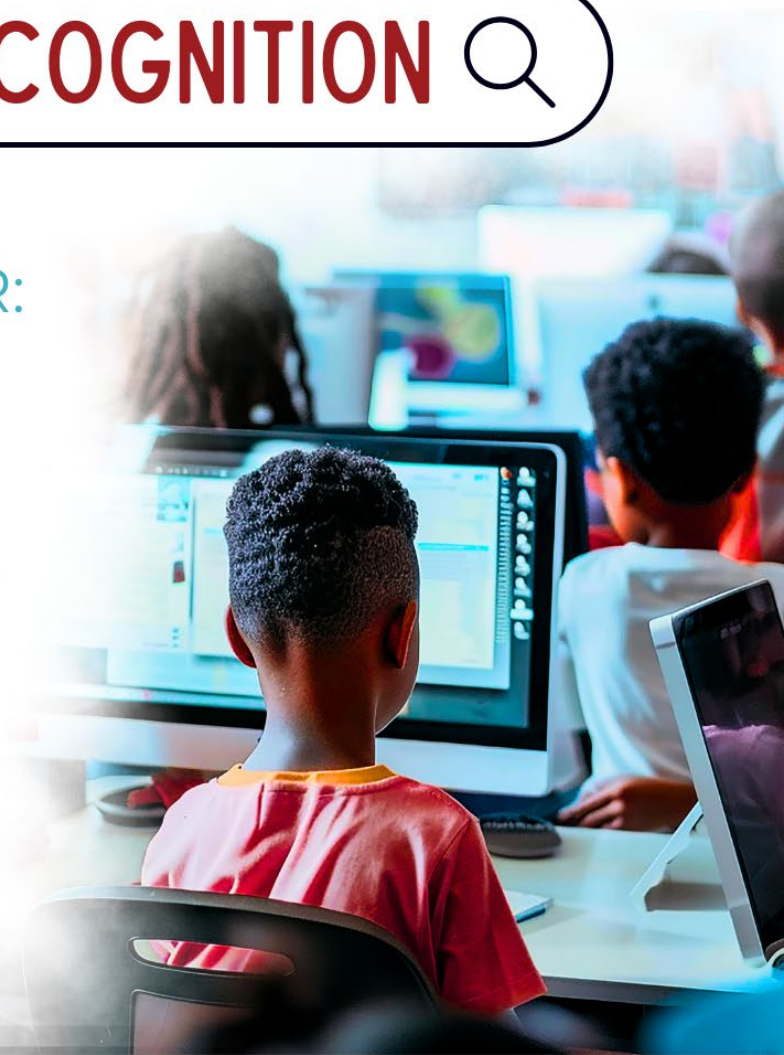


CHECK OUT THIS UPCOMING WEBINAR:

PROGRAM UPDATES AND HOW TO BE A STAR

SEP. 17, 2025, 3:30PM - 4:30PM

bit.ly/3JD2rrK





2026

SCHOOLS CERTIFICATION

FALL WEBINAR SERIES



SEP.24



OCT.1



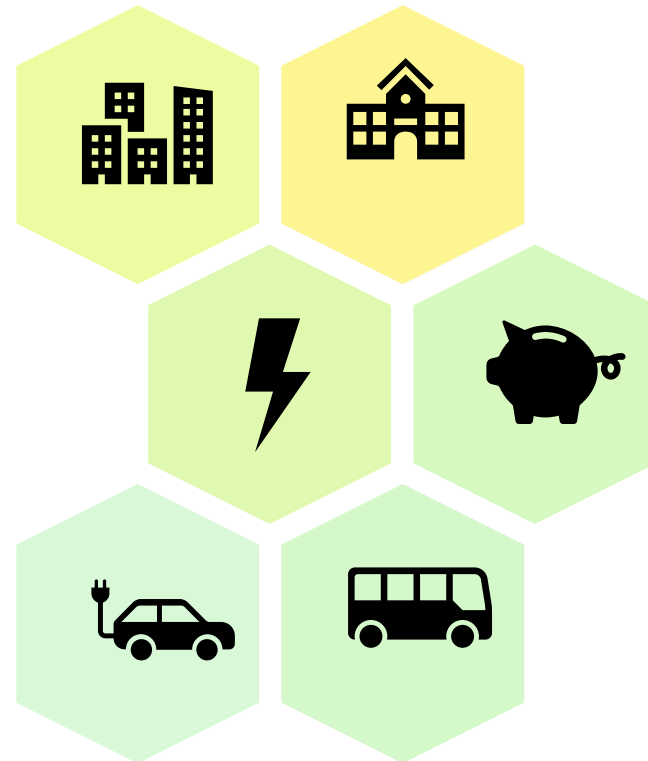
DEC. 4

Register: bit.ly/SJSFallCertWebinars



Upcoming Energy Webinars

Sept 16 th	PSE&G Electric Vehicle Webinar
TBD	JCPL EV Webinar <i>(late September/early October)</i>
TBD	SJS School Bus Webinar <i>(late October/early November)</i>
Nov 5 th	PJM and Utility Demand Response
Dec 3 rd	Energy Efficiency Webinar
Dec 10 th	Building Management Systems
Dec 17 th	Shared Mobility Webinar
TBD	Green Financing Tools



Are you signed up for the Sustainable Jersey for Schools mailing list?

Bi-weekly emails with program updates, new funding opportunities, partner event information, and more!



Join Sustainable Jersey For Schools
Mailing List

Join

Sign-up button located at the bottom of the Sustainable Jersey for Schools website homepage at sustainablejerseyschools.com