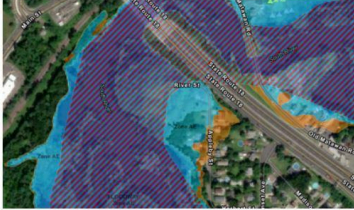


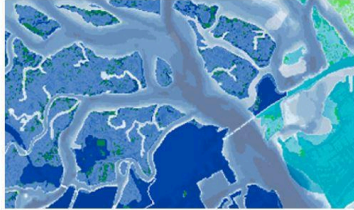
NJ Datasets for Climate Change Education

Learn how to integrate New Jersey-specific datasets into existing curricula to effectively address the **NJ Climate Change Student Learning Standards** and engage students in meaningful learning!



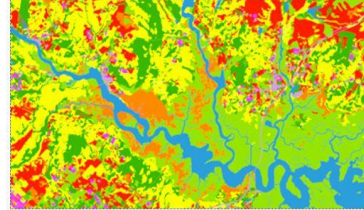
Local Planning Navigator

A decision-support tool for building community resilience



NJ FloodMapper

An interactive flood exposure data mapping tool



NJ Forest Adapt

A data mapping tool for forest management

Across Content Areas and Curricula

Dive deeper into incorporating NJ-specific datasets across various content areas to address NJ Climate Change Student Learning Standards and engage students by exploring information relevant to their daily lives. Presenters will highlight datasets and share examples of how they could be integrated into Math and Science; ELA and History; Health and Physical Education; and Visual and Performing Arts curricula.

April 16, 2024, 3:30pm - 5:00pm

[Register](#)

Adapting OpenSciEd Curriculum

This webinar will highlight how science teachers can integrate NJ-specific datasets into OpenSciEd curriculum to address the NJ Climate Change Student Learning Standards and engage students by exploring information relevant to their daily lives. Presenters will share supplementary materials developed by Rutgers Center for Mathematics, Science, and Computer Education and Sustainable Jersey for OpenSciEd's Unit 7.6. *Earth's Resources & Human Impact* as a model.

May 2, 2024, 3:30pm - 5:00pm

[Register](#)

NOTE: This event was originally scheduled for April 15, 2024.

